

PROTAC® Building Blocks

>1000 PROTAC Linker	>100 E3 Ligase-CRBN	>50 E3 Ligase-VHL	>20 E3 Ligase-others
------------------------	------------------------	----------------------	-------------------------

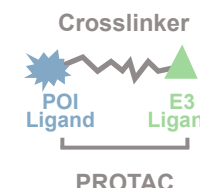
About Us

Pharmalego

Products:



Advantages

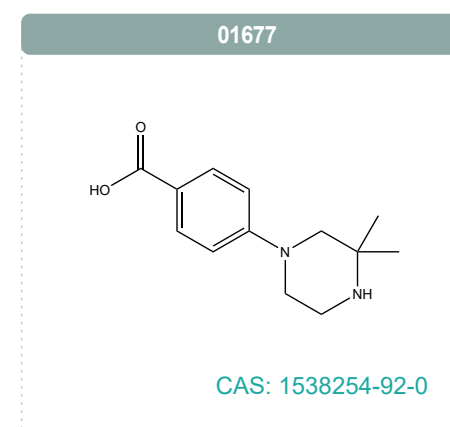
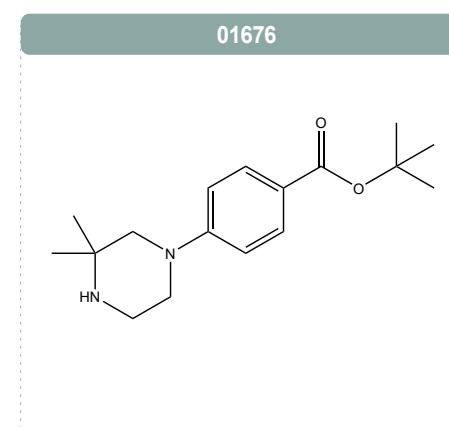
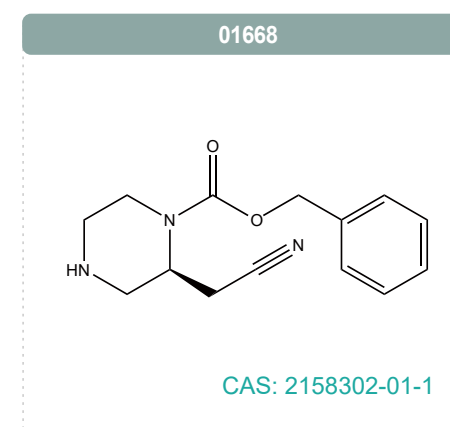
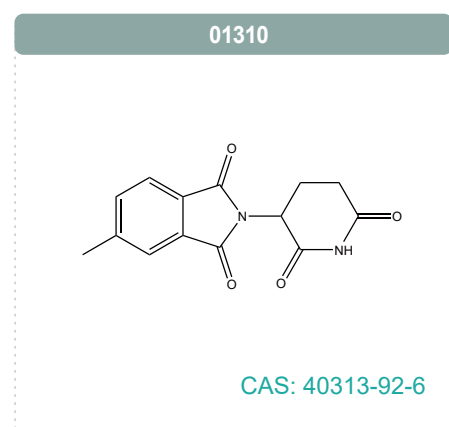
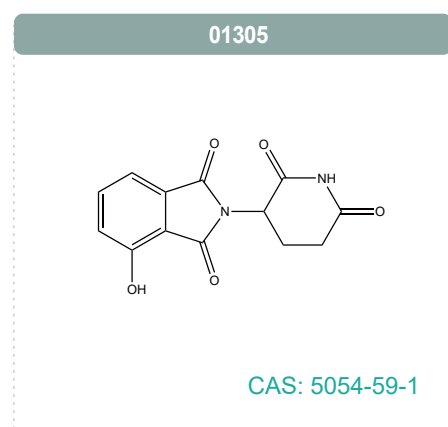
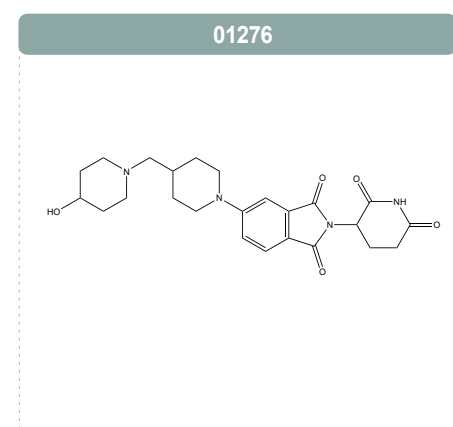
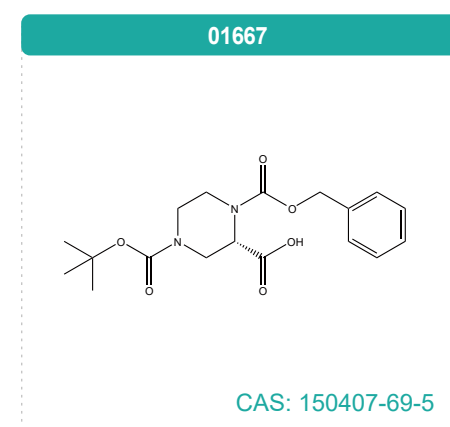
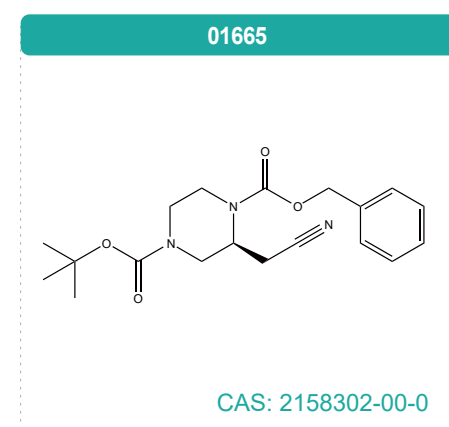
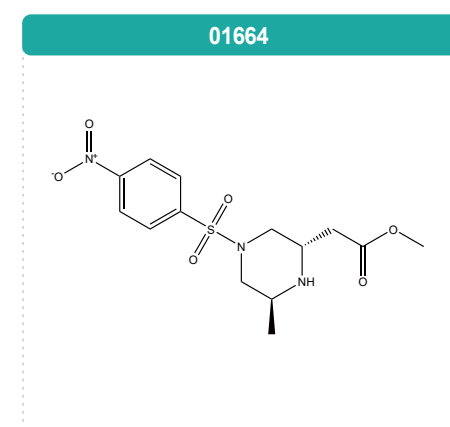
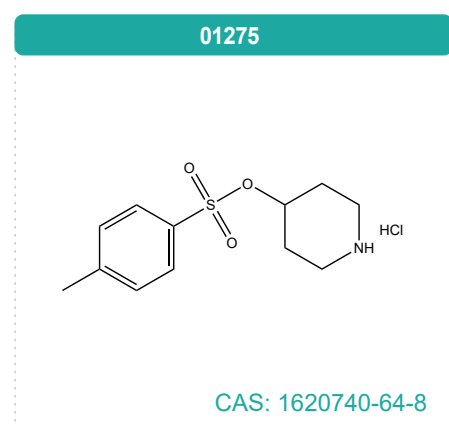
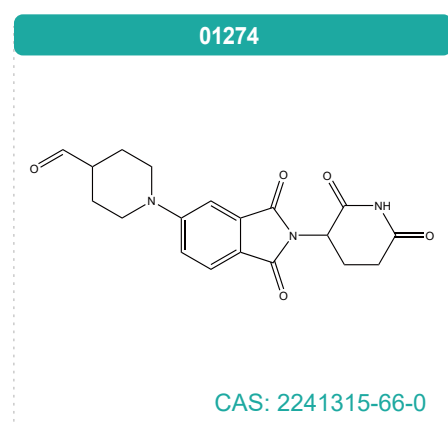
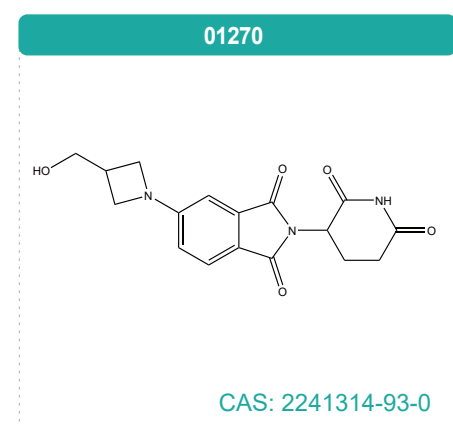
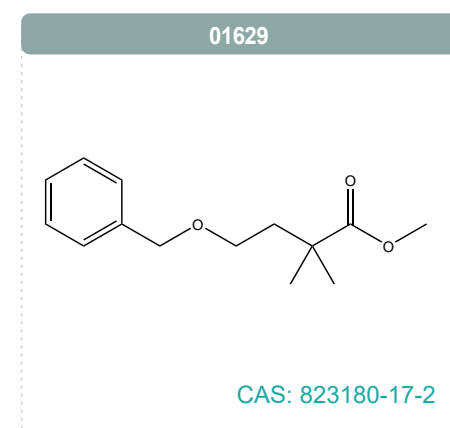
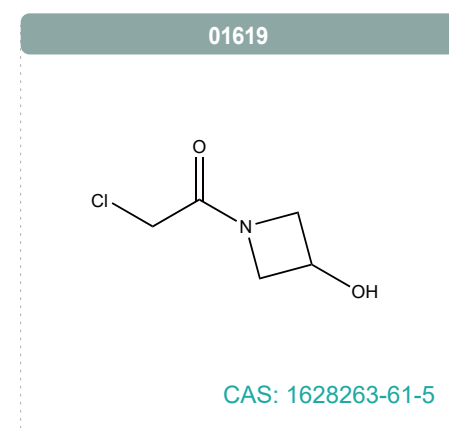
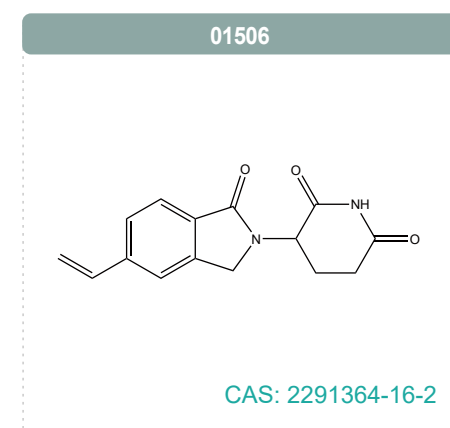
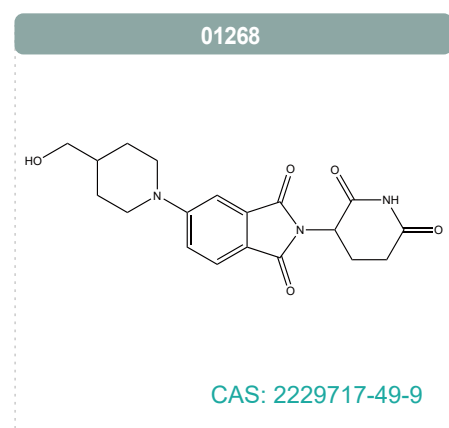
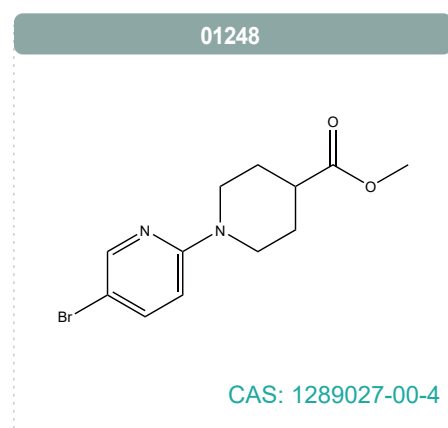
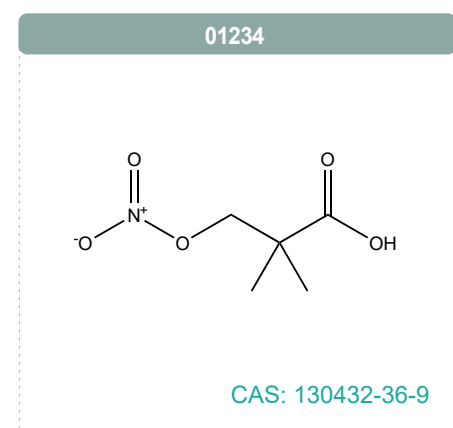
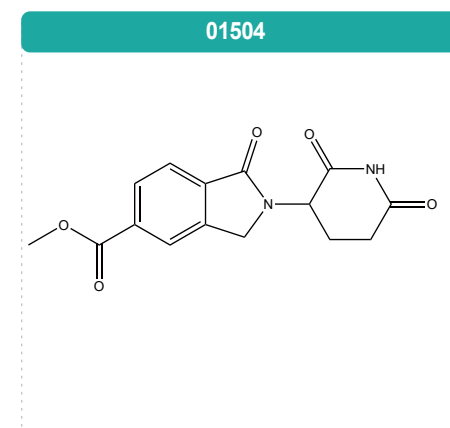
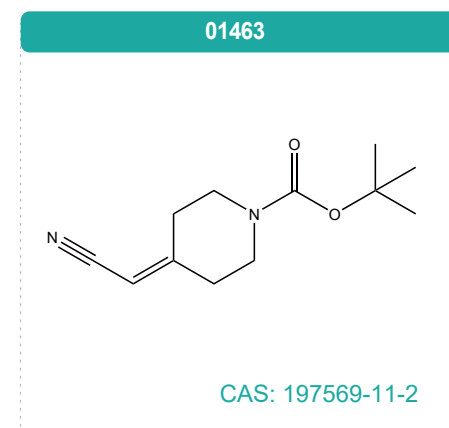
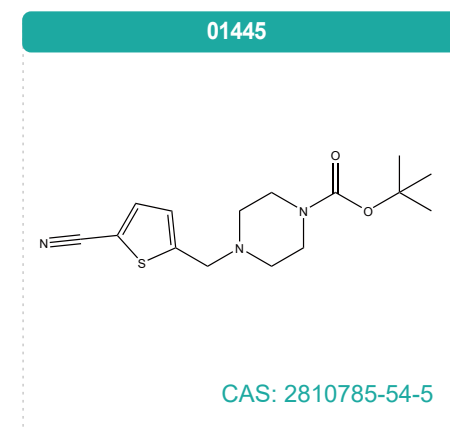
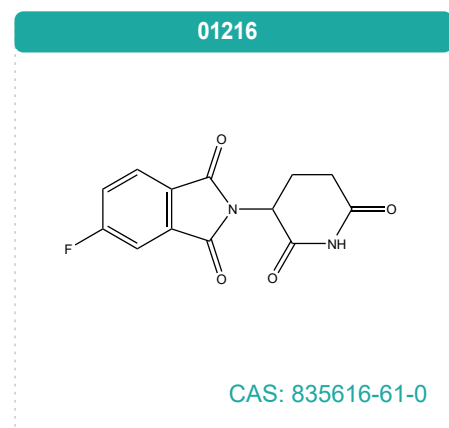
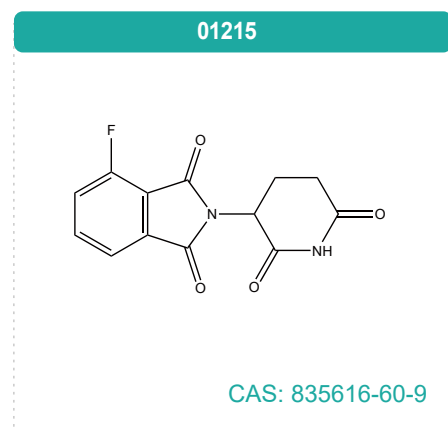
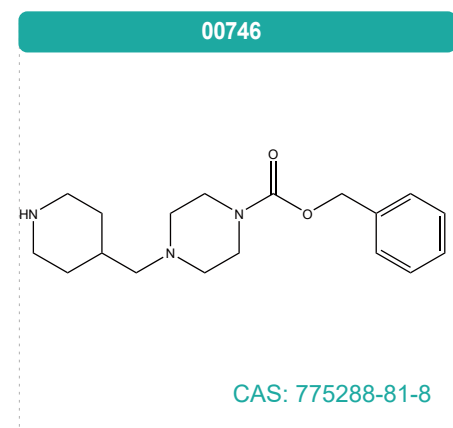


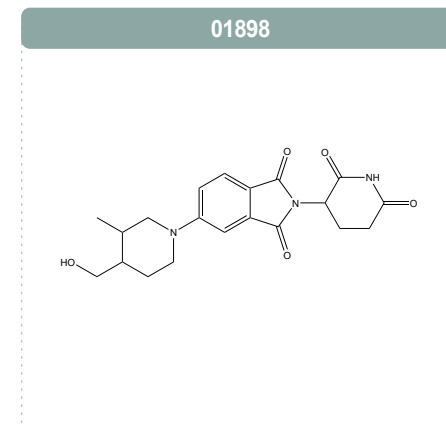
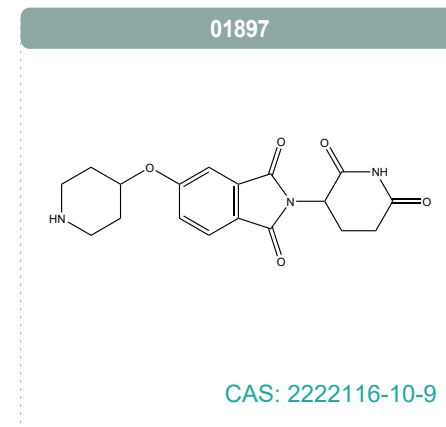
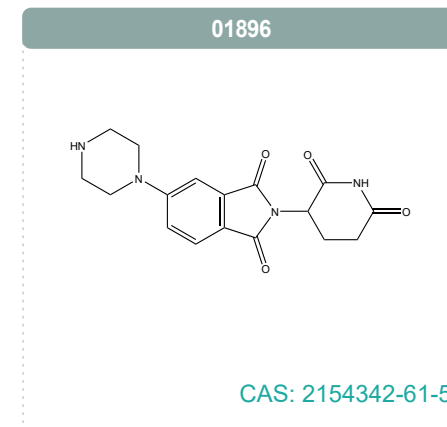
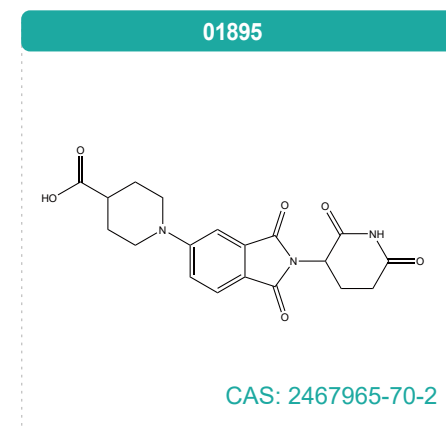
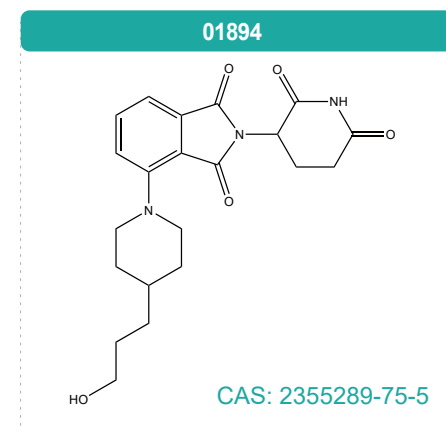
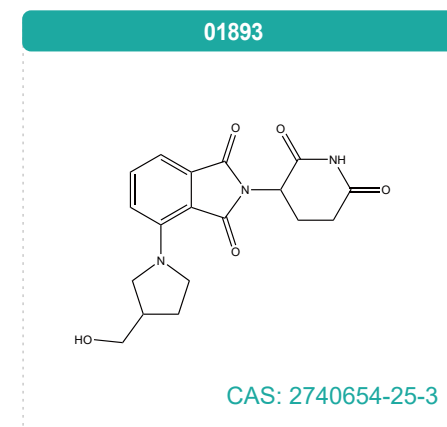
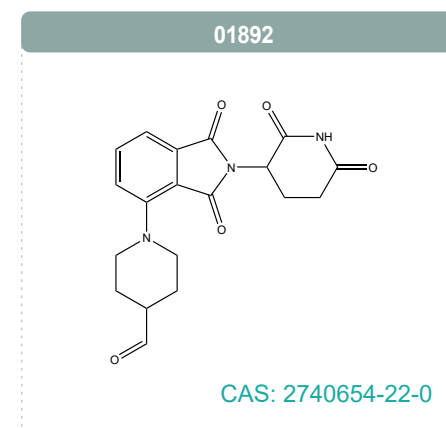
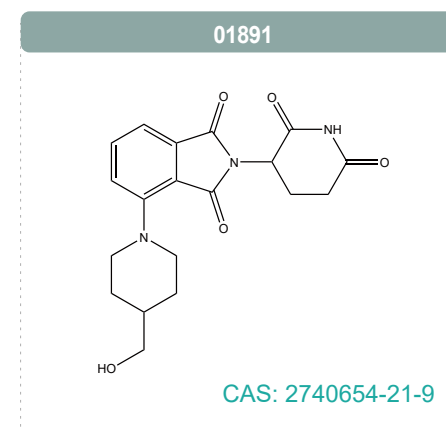
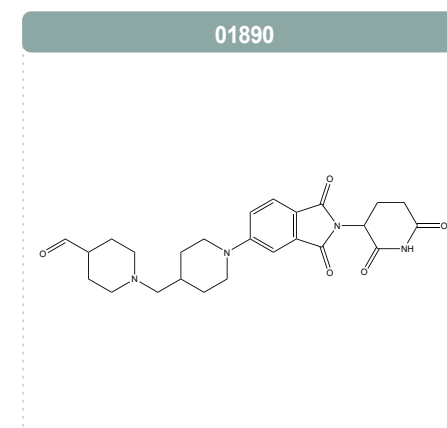
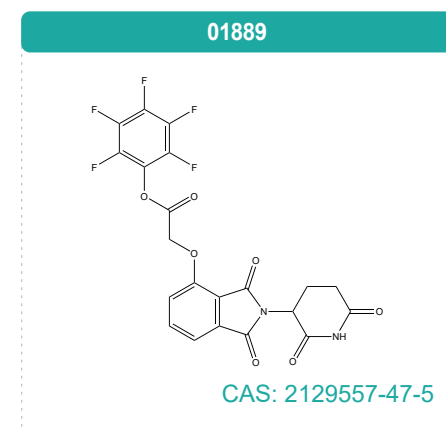
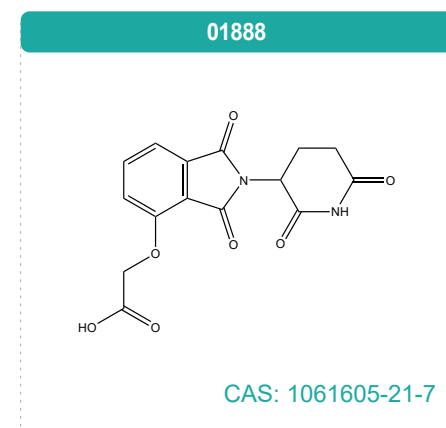
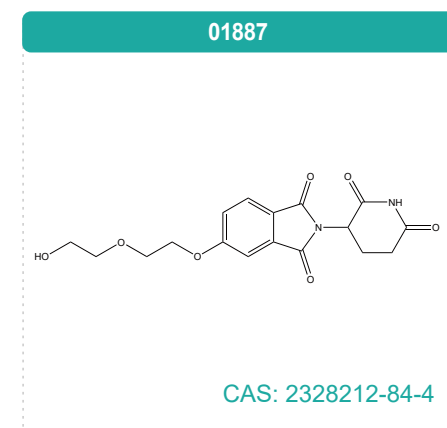
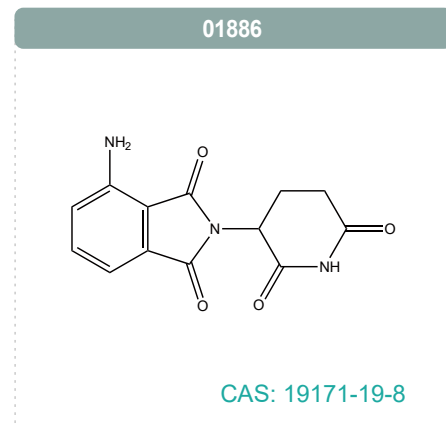
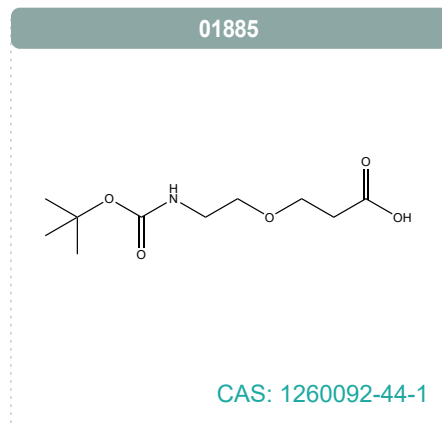
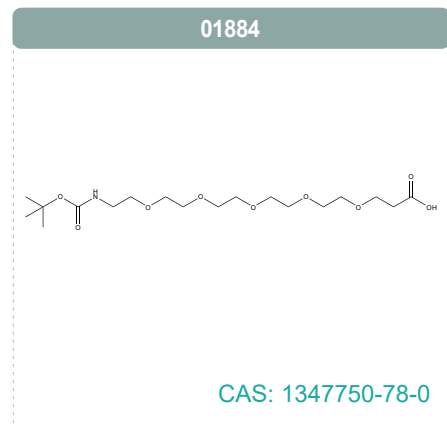
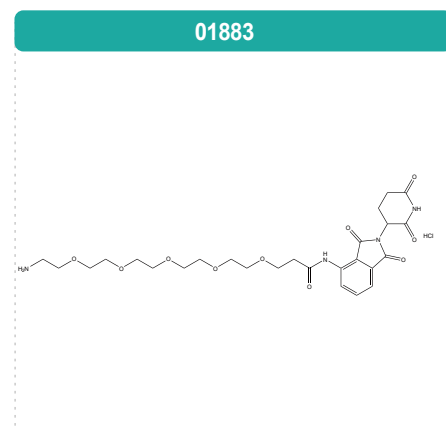
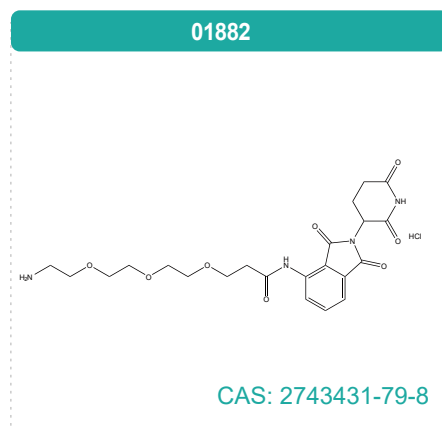
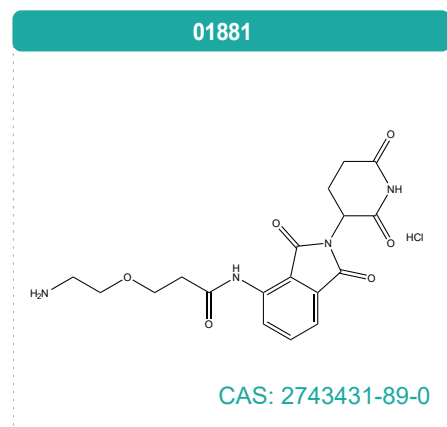
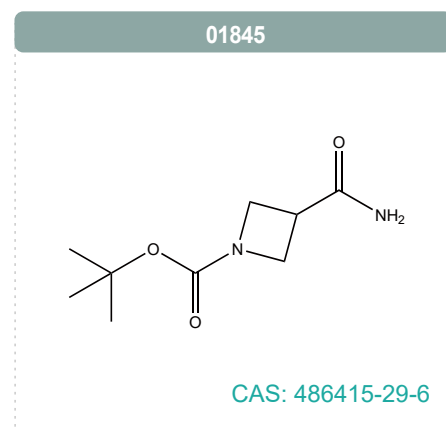
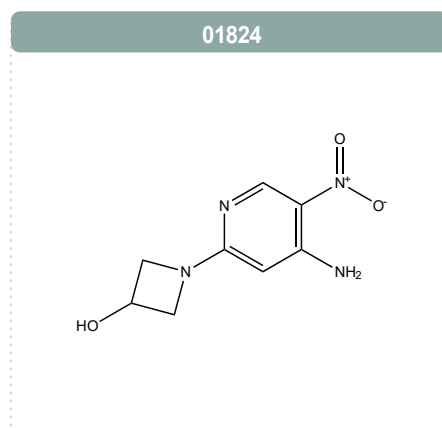
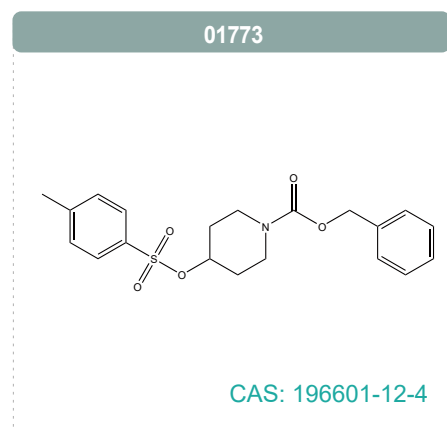
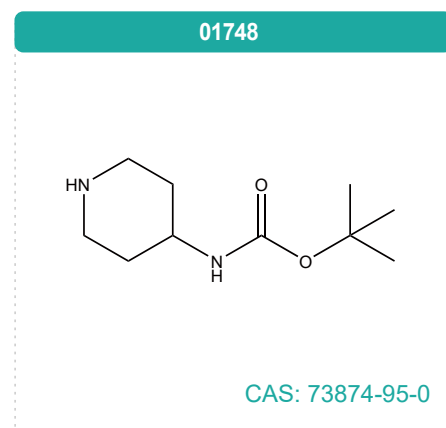
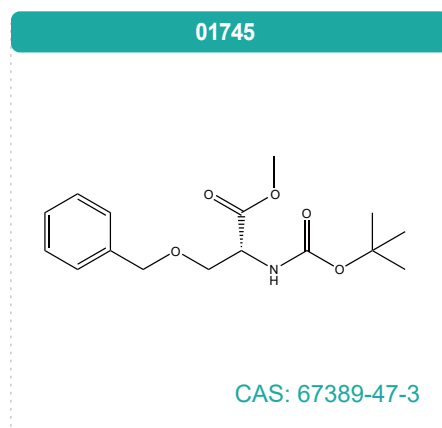
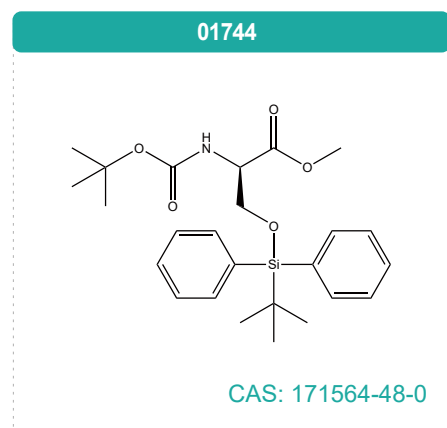
PROTAC® Building Blocks

Proteolysis targeting chimeras (PROTACs) is the recently emerged field in drug discovery. Targeted protein degradation is a novel strategy that uses small molecules to hijack endogenous proteolysis systems to degrade disease-relevant proteins.

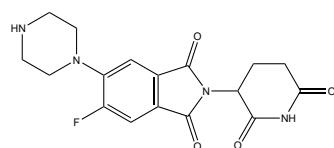
Our PROTAC building blocks library composed of compounds highly similar to those known to target E3 ligases, as well as of linker-like compounds. We offer known and novel building blocks (E3 ligase ligands, ligands with linkers, linkers) for the synthesis of PROTACs.

Our protein degrader building blocks are the easiest way to generate heterobifunctional degrader screening libraries from one starting target ligand to expedite degrader hit discovery. Within this building block collection that comprises all the components to construct degraders, our ligand-linker conjugates eliminate upfront synthetic steps, requiring only the chemistry to link a target ligand on the terminal functional group.



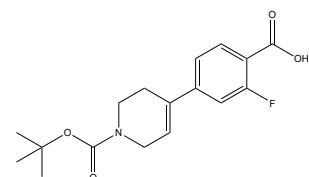


01899



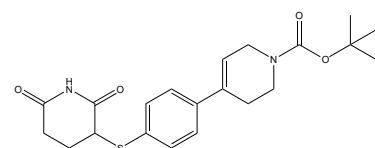
CAS: 2222114-22-7

01900



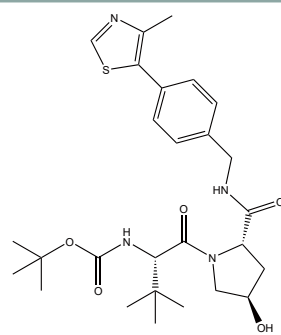
CAS: 1643153-49-4

01908



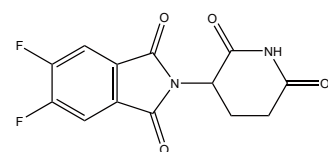
CAS: 2837985-51-8

01909



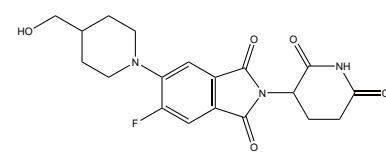
CAS: 1448189-98-7

01910



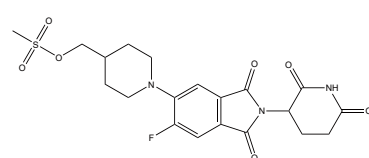
CAS: 1496997-41-1

01911



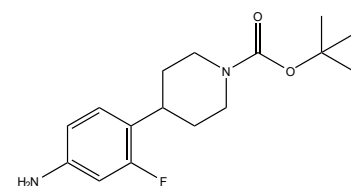
CAS: 2505501-99-3

01912



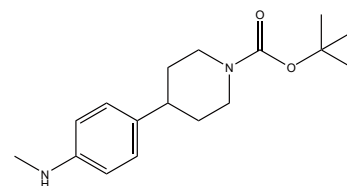
CAS: 188975-15-7

01916



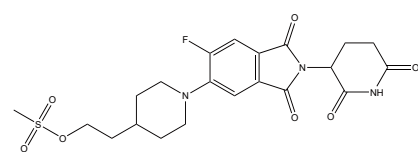
CAS: 1504246-09-6

01917



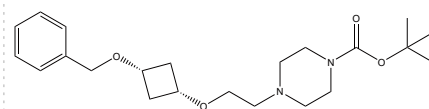
CAS: 2138440-82-9

01918



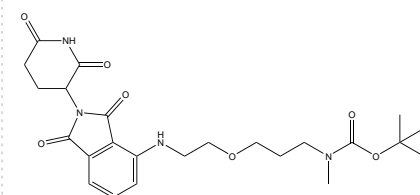
CAS: 2408504-91-4

01919



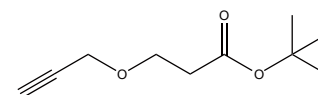
CAS: 2408504-91-4

01920



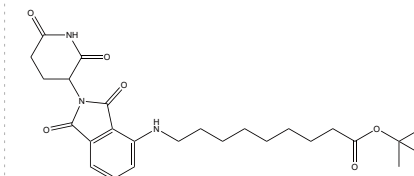
CAS: 2408504-91-4

01921



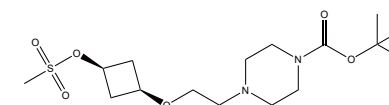
CAS: 2428400-23-9

01922

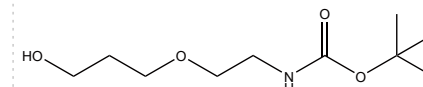


CAS: 2428400-23-9

01923

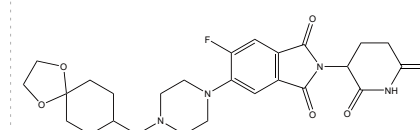


01924

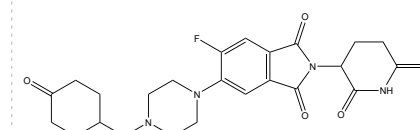


CAS: 947664-35-9

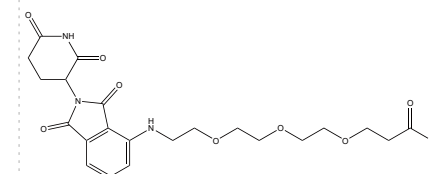
01925



01926

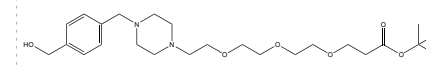


01927

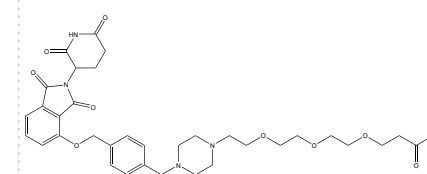


CAS: 2138440-82-9

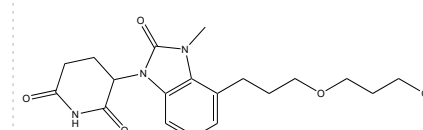
01928



01929

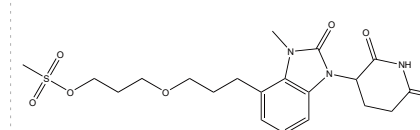


01930

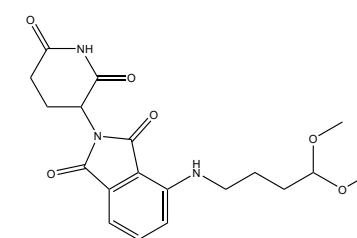


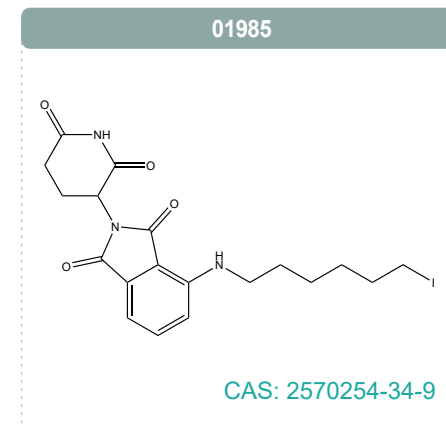
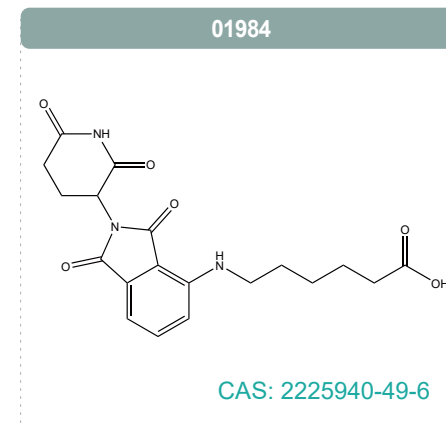
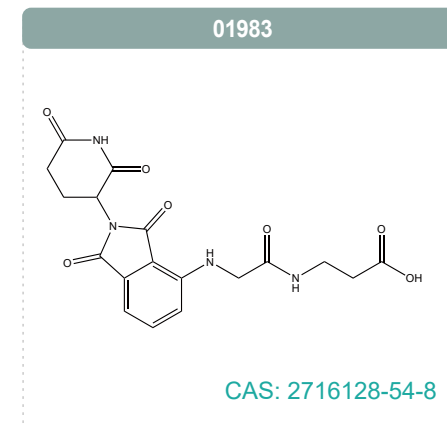
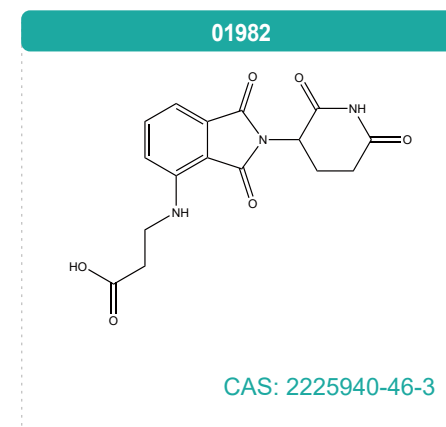
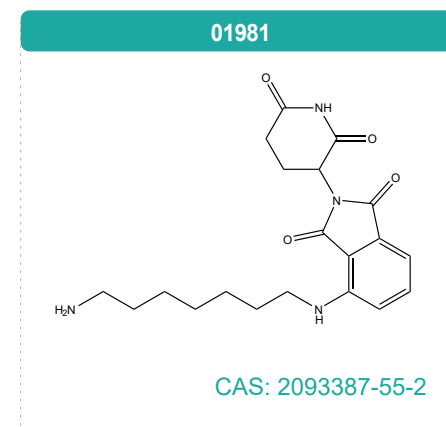
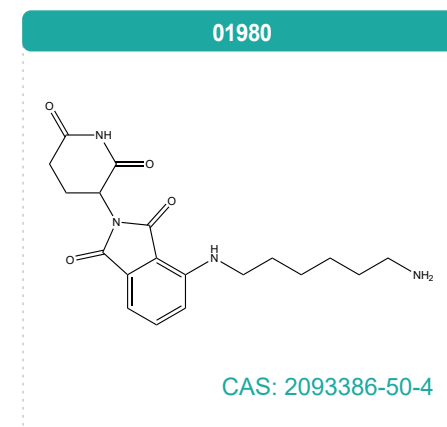
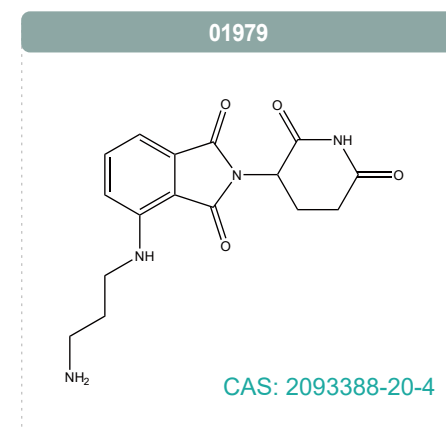
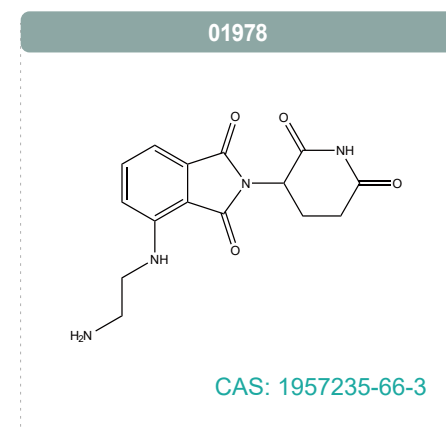
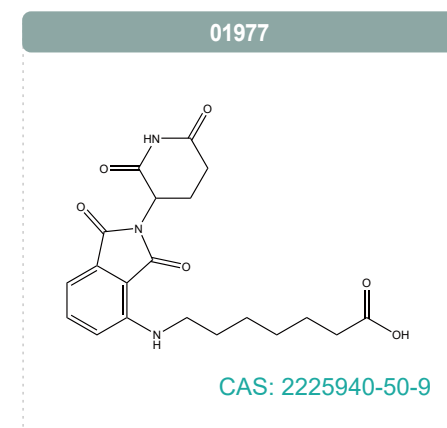
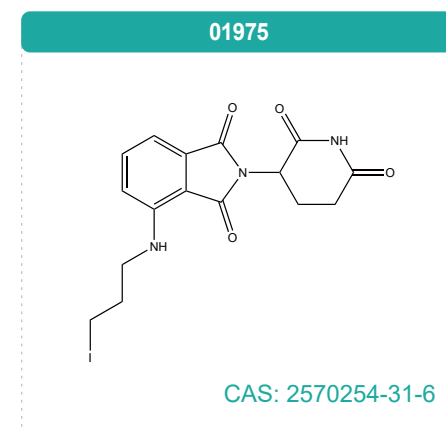
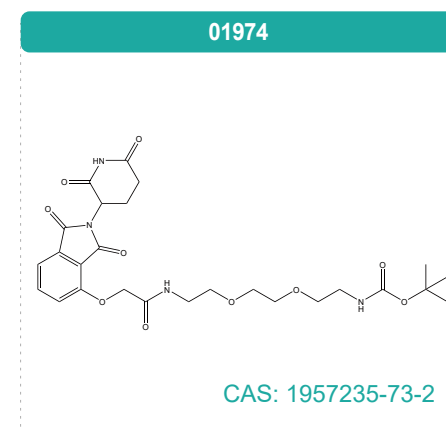
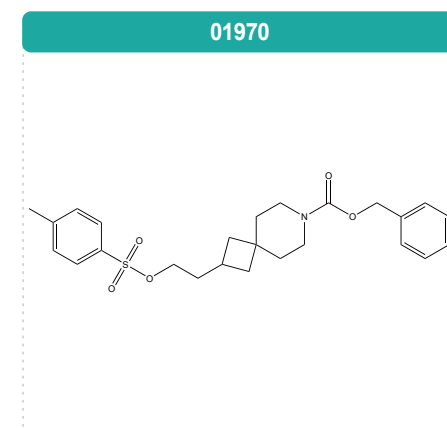
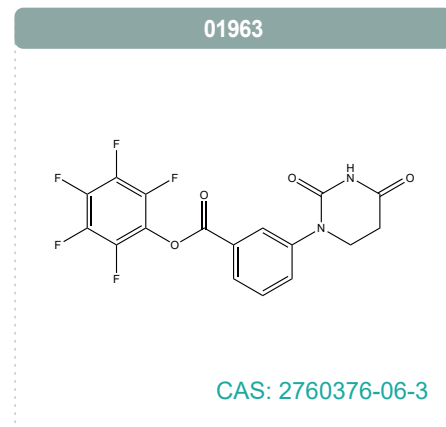
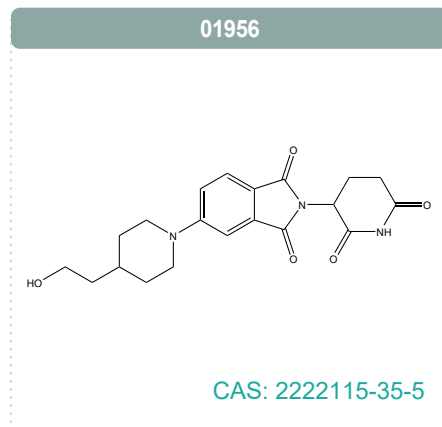
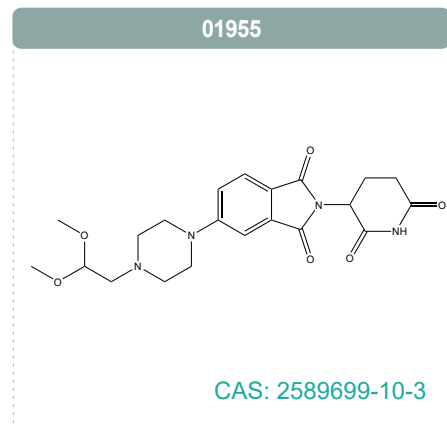
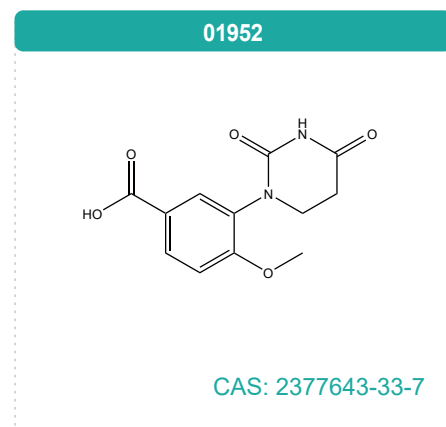
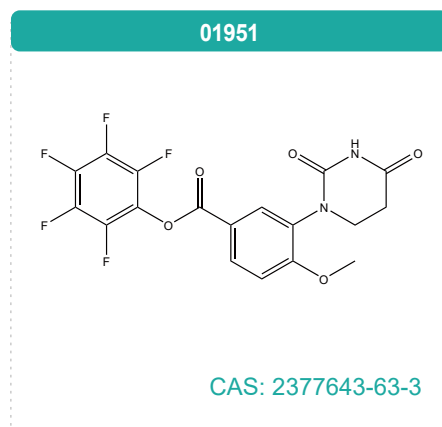
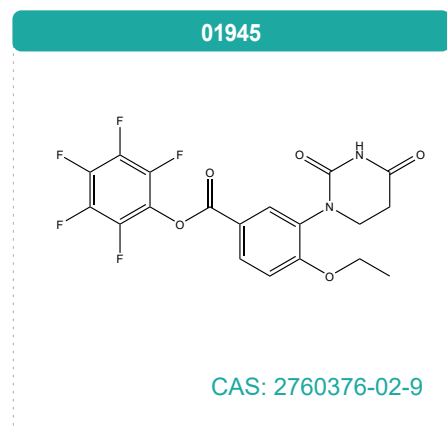
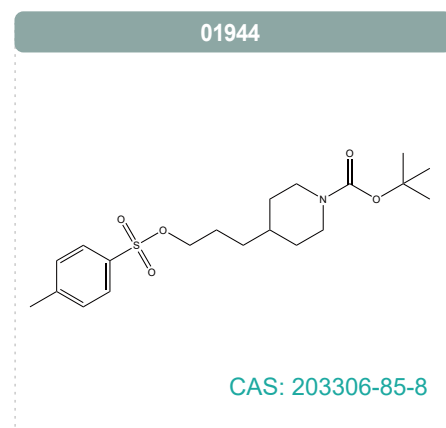
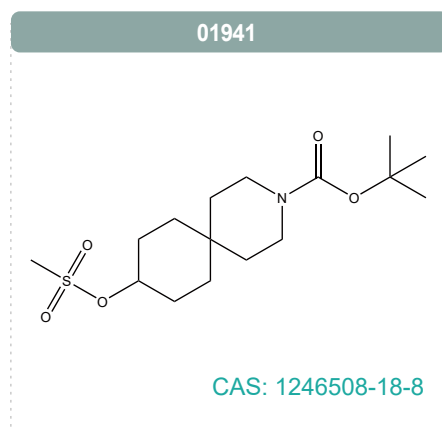
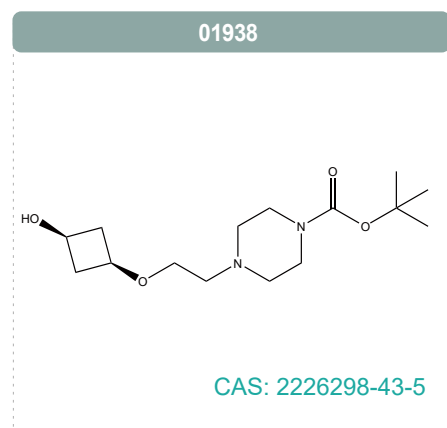
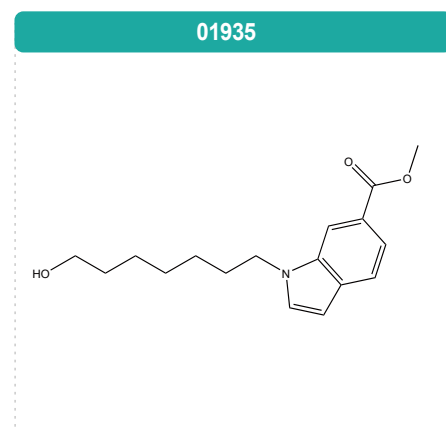
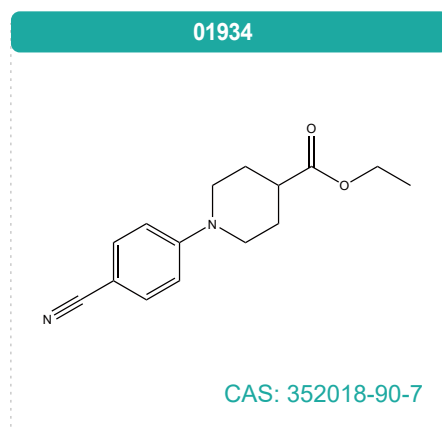
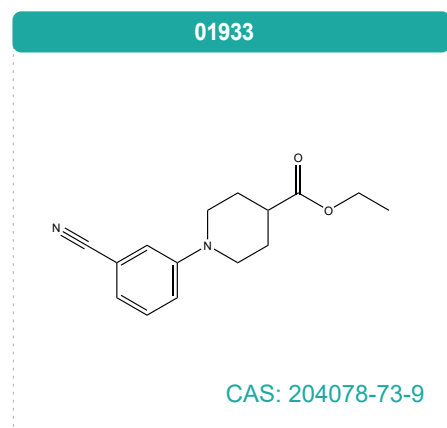
CAS: 2408504-91-4

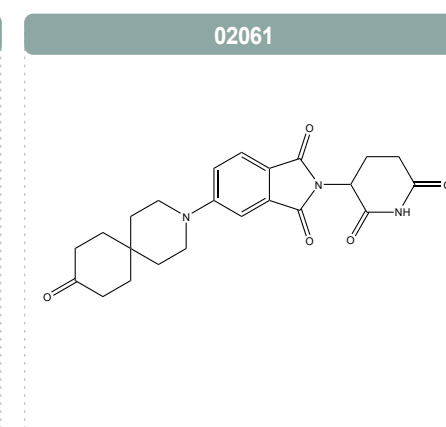
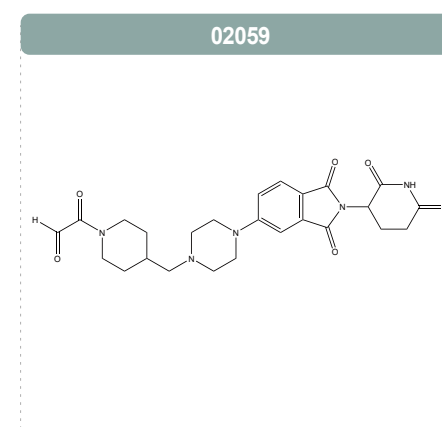
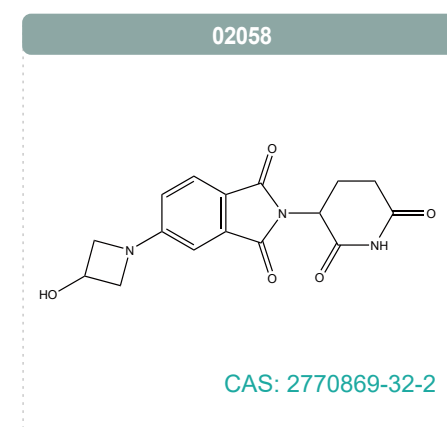
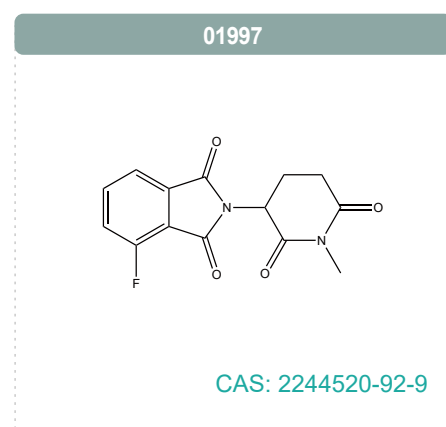
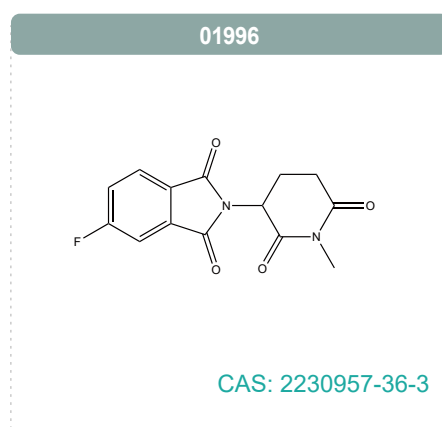
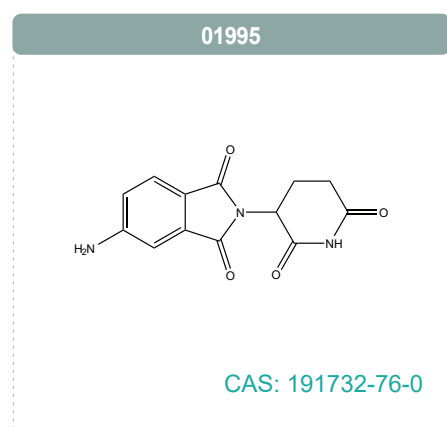
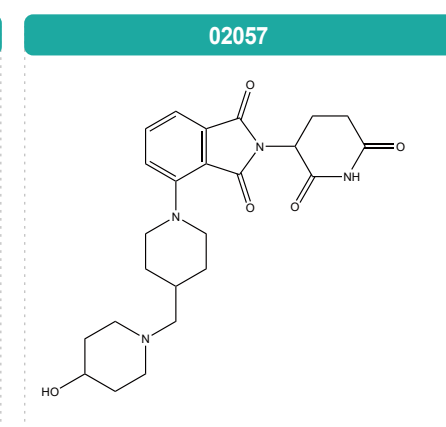
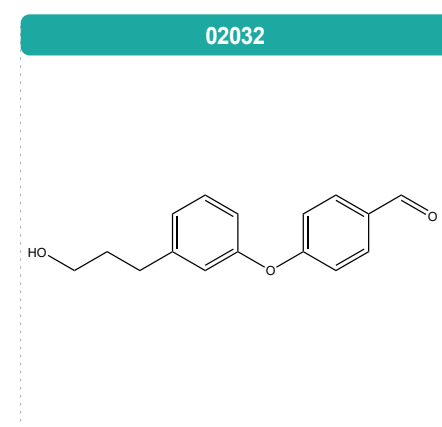
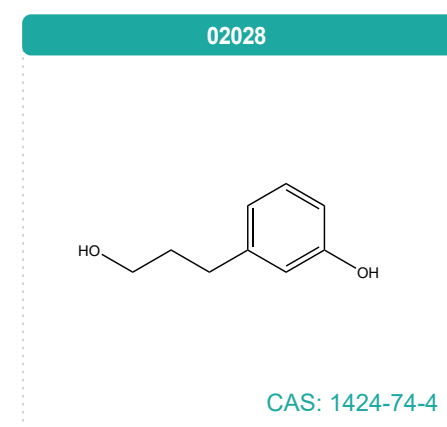
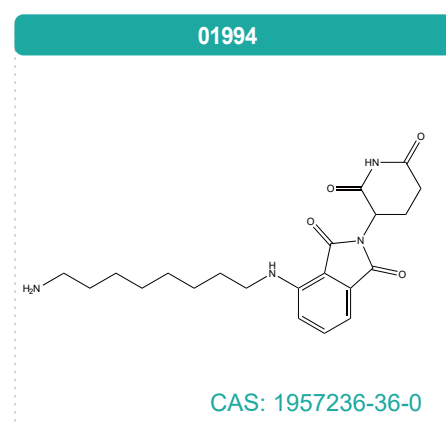
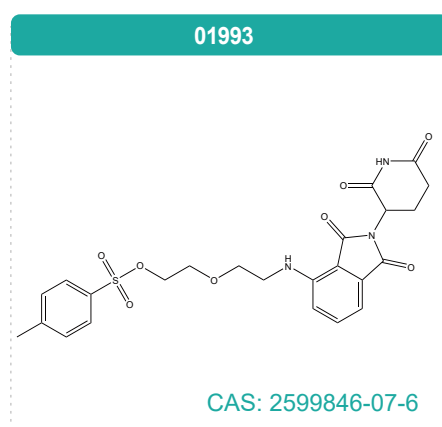
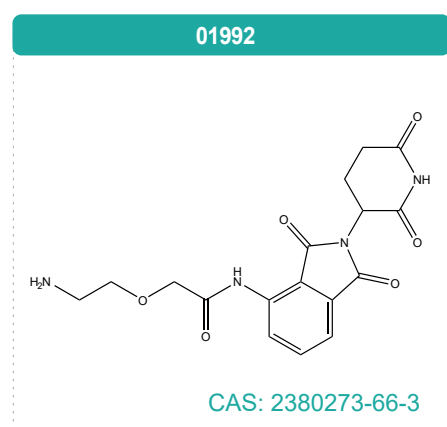
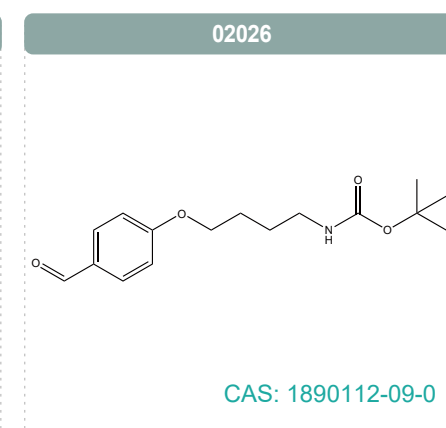
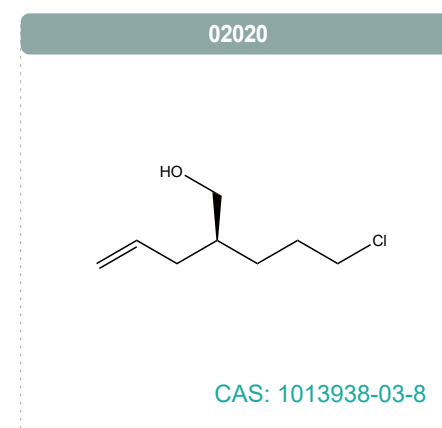
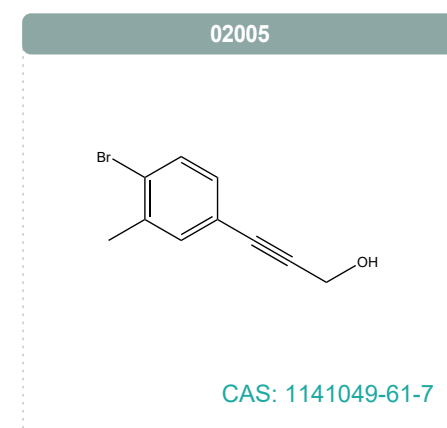
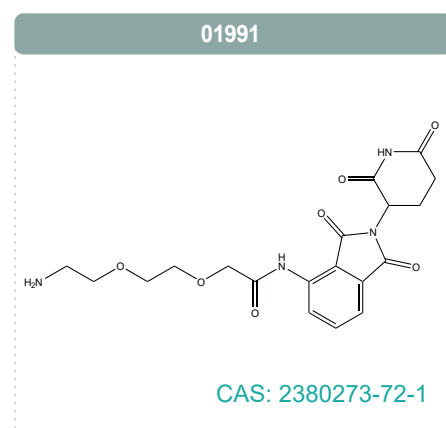
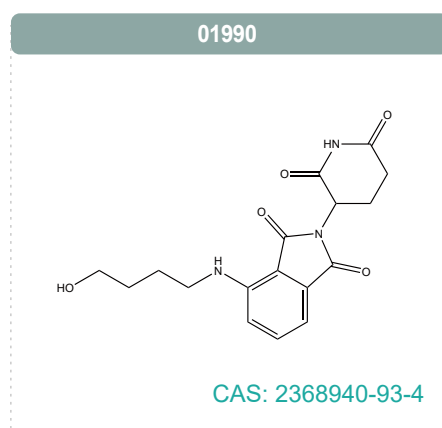
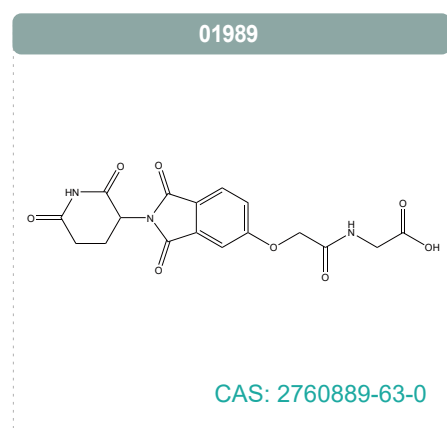
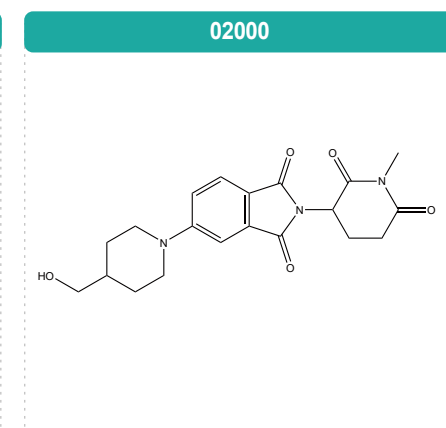
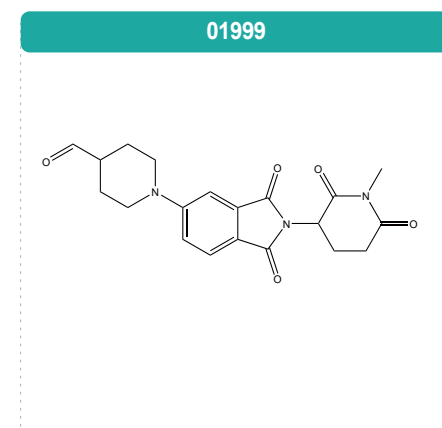
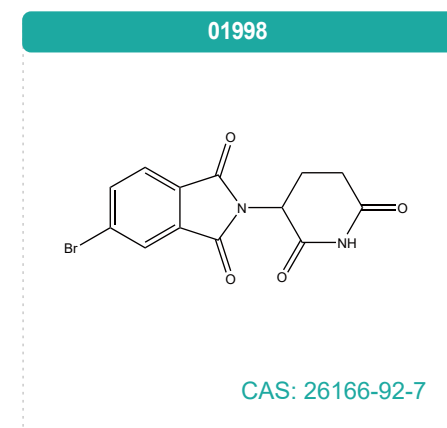
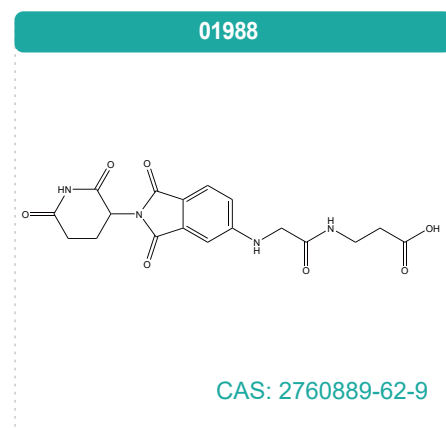
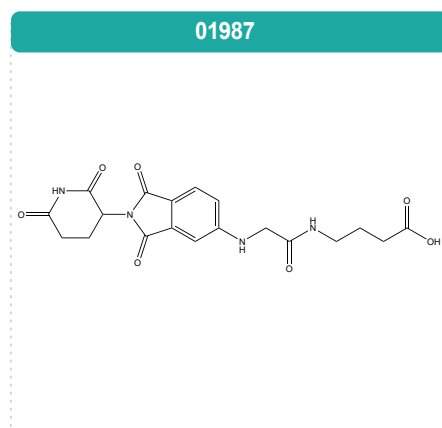
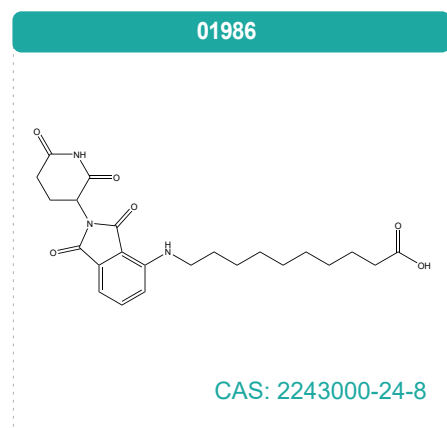
01931

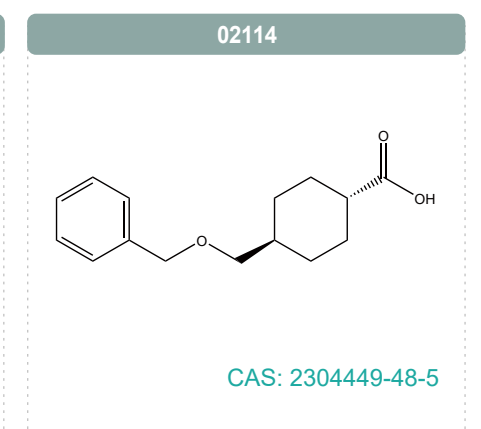
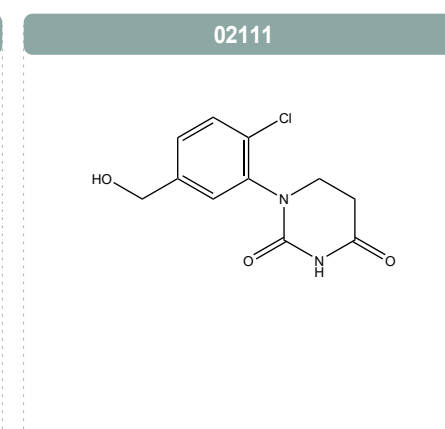
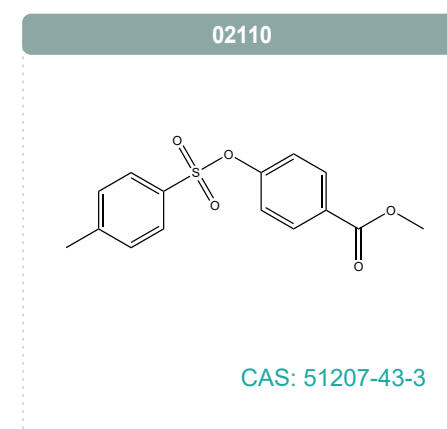
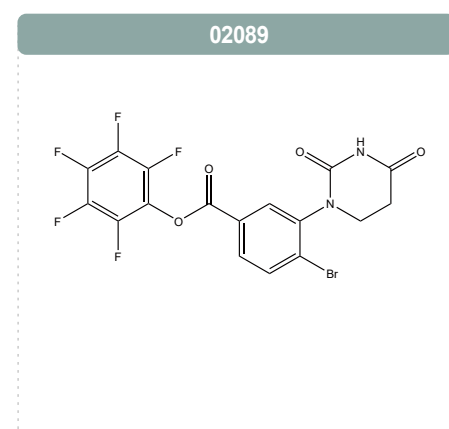
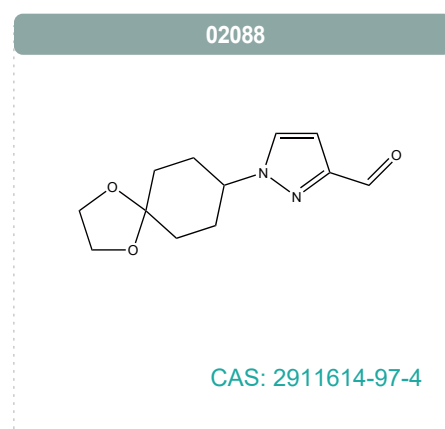
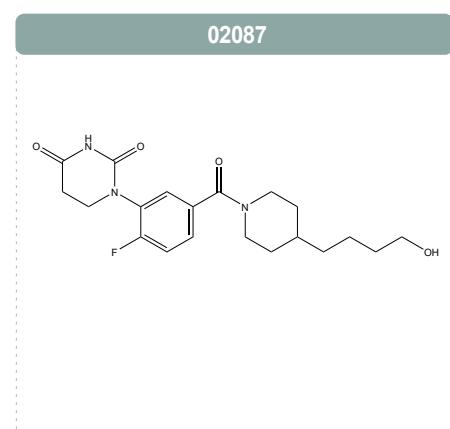
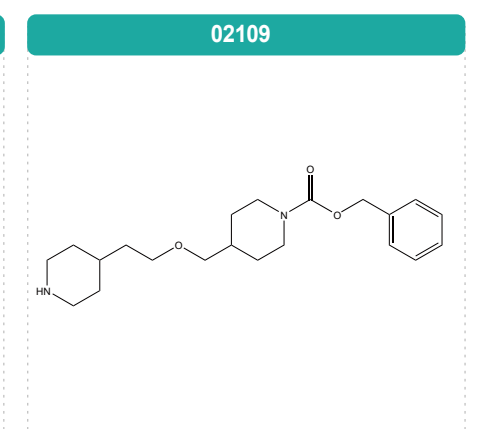
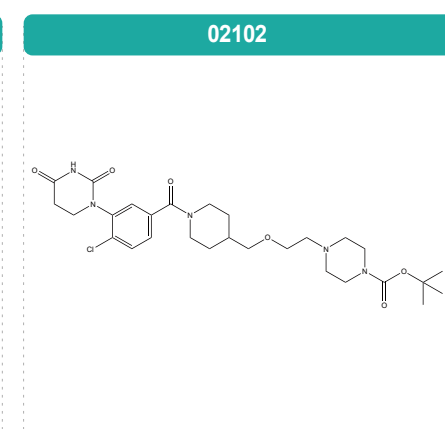
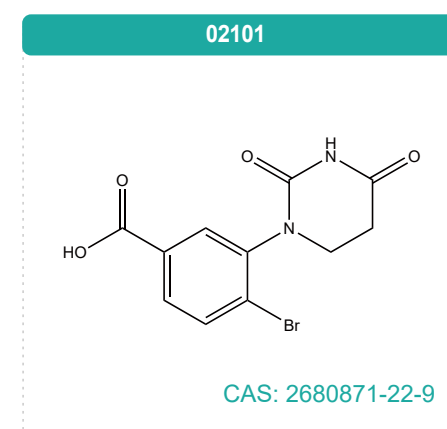
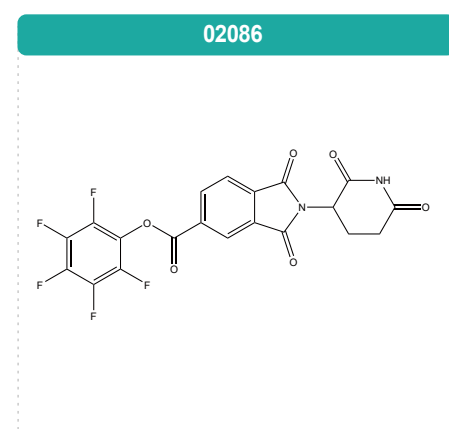
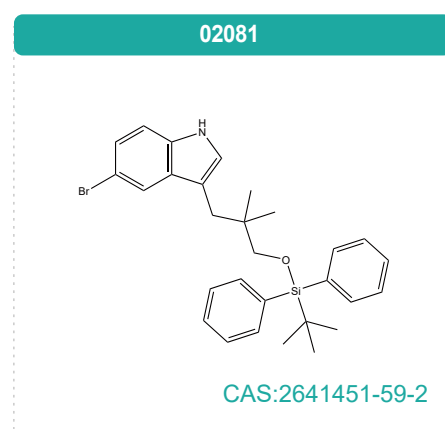
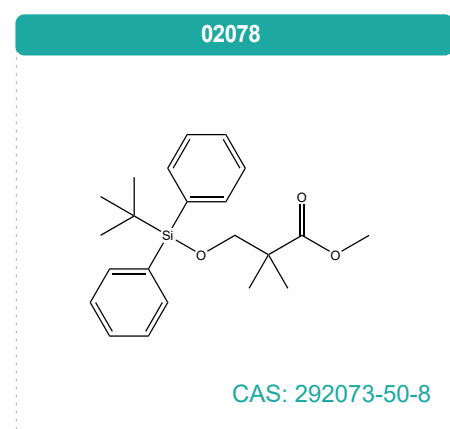
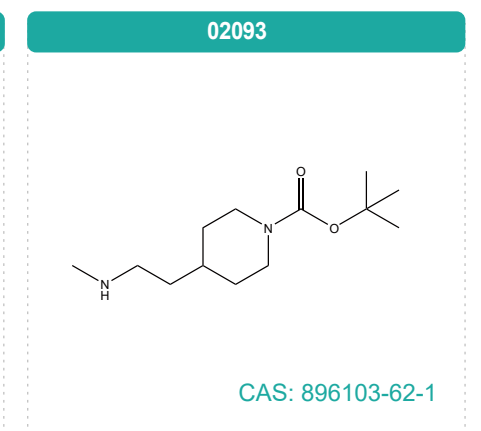
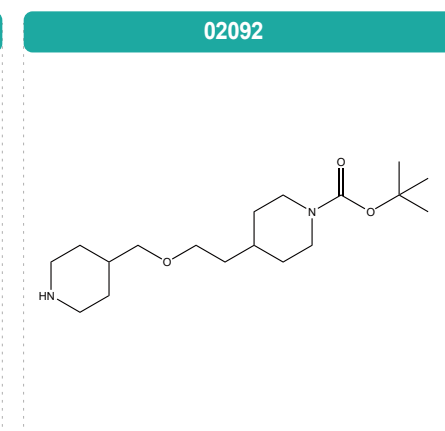
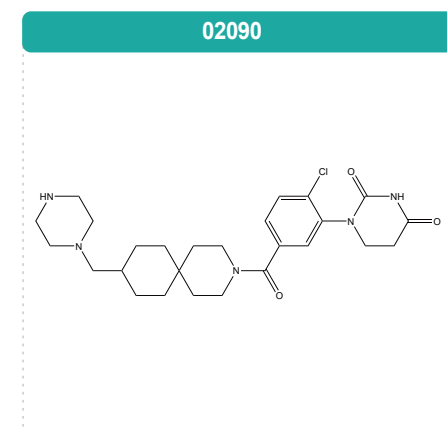
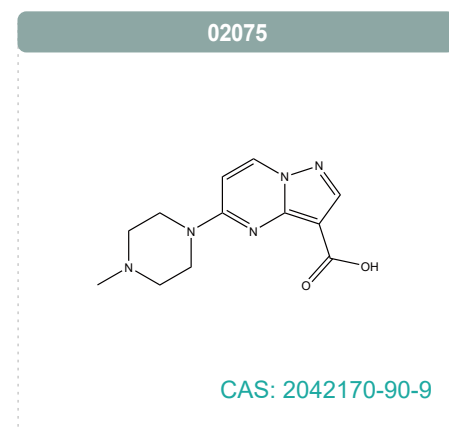
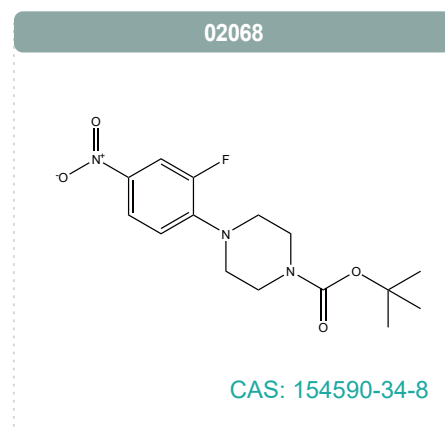
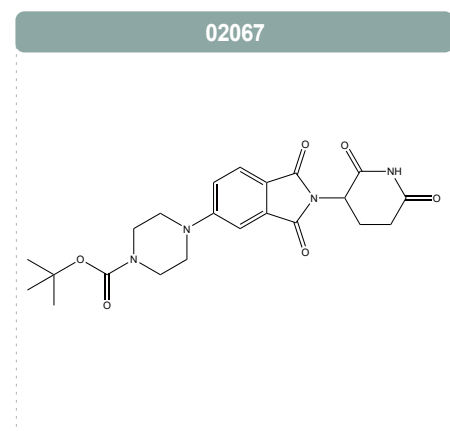
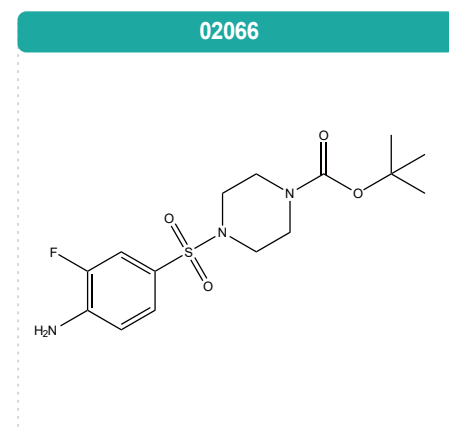
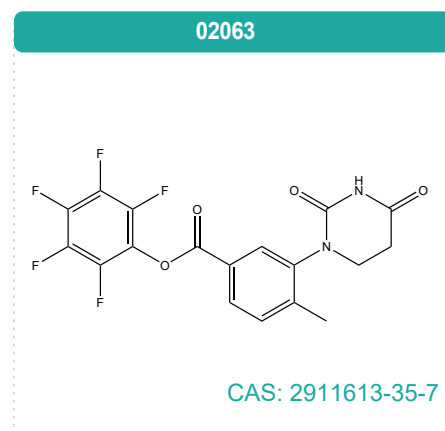
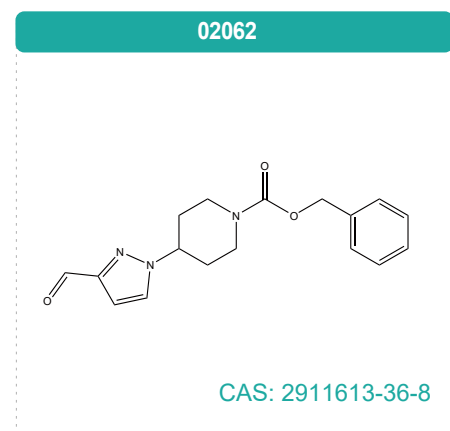


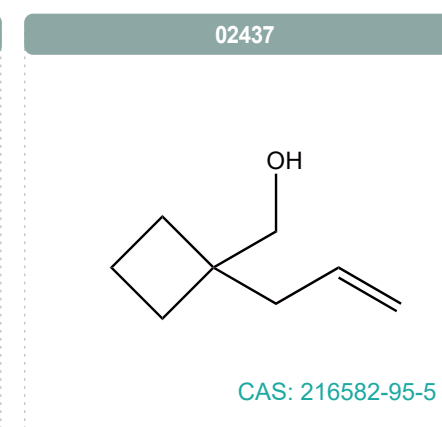
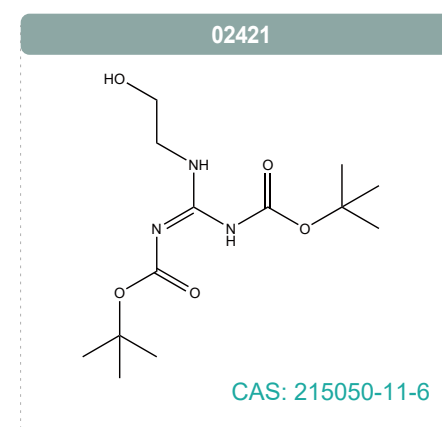
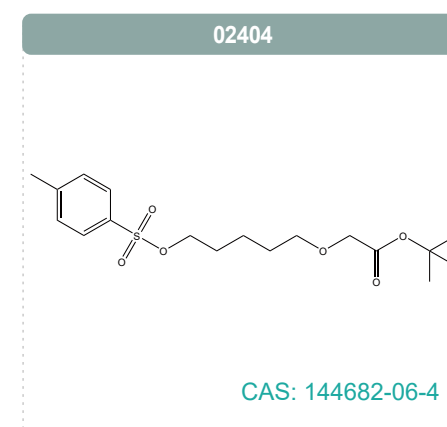
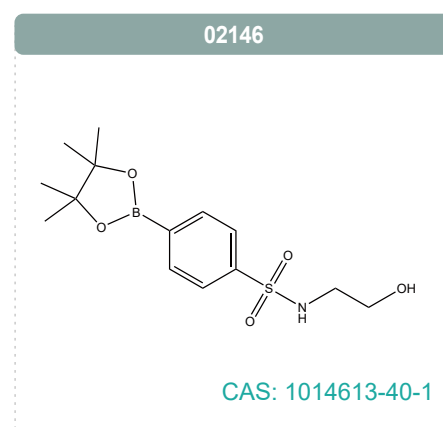
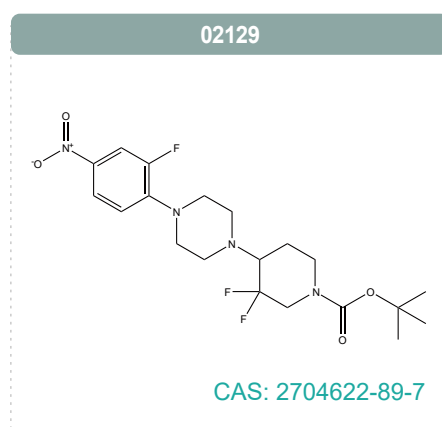
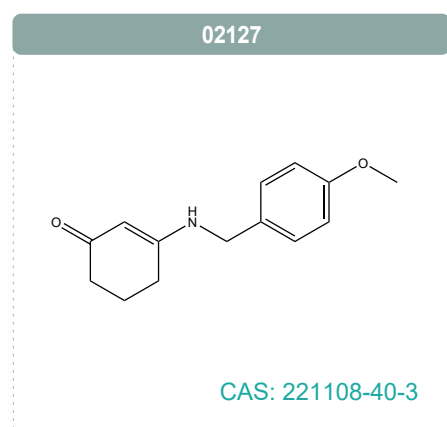
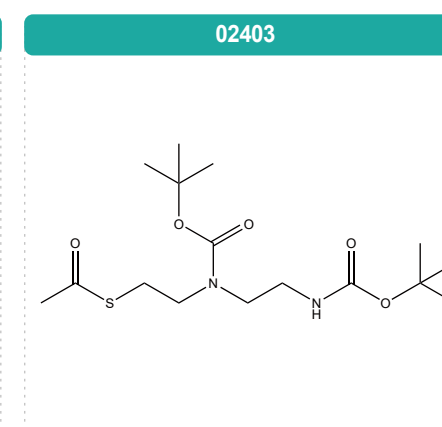
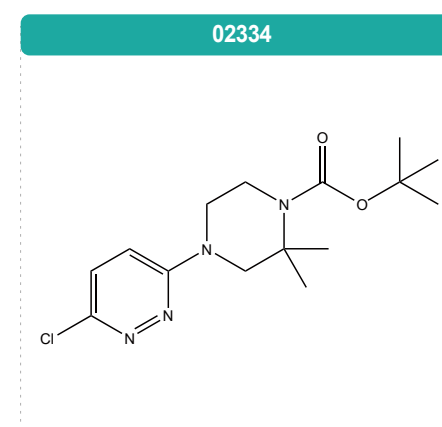
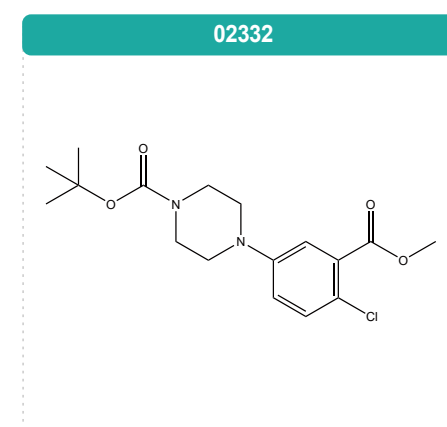
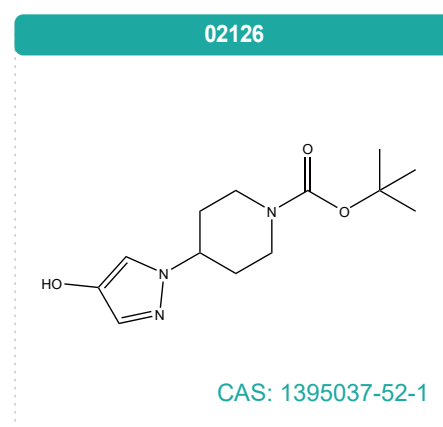
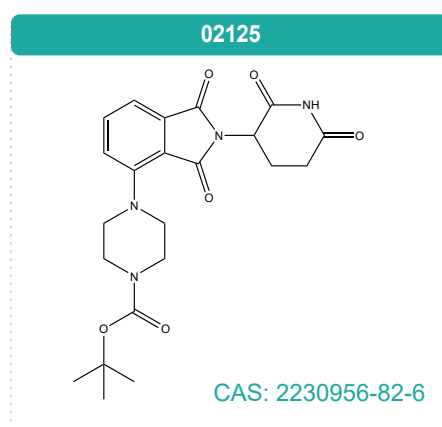
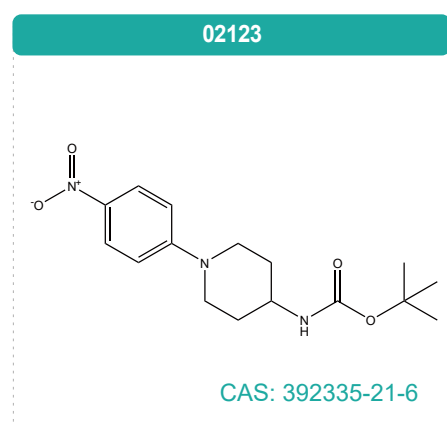
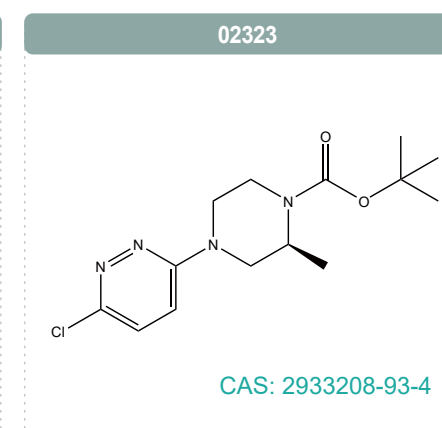
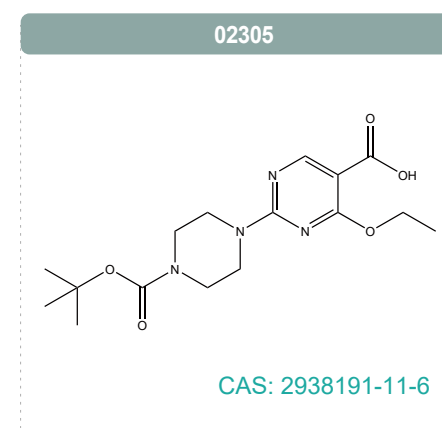
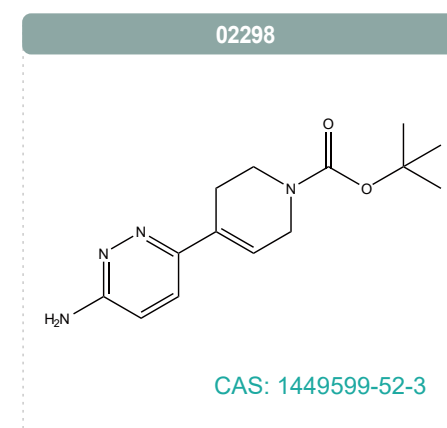
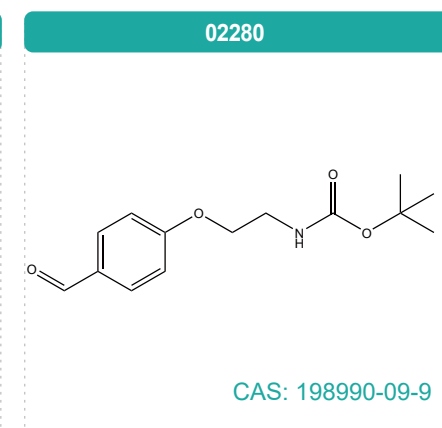
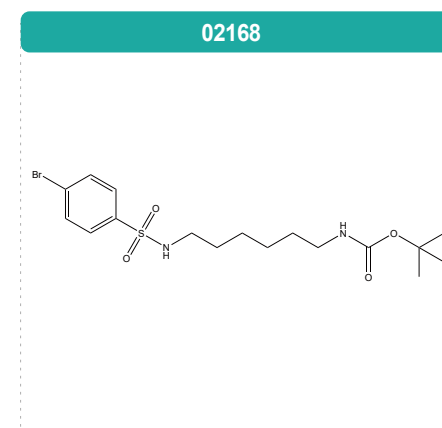
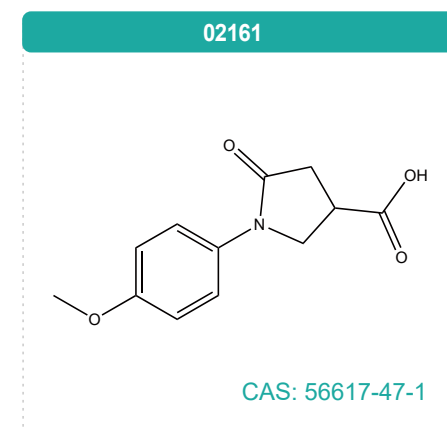
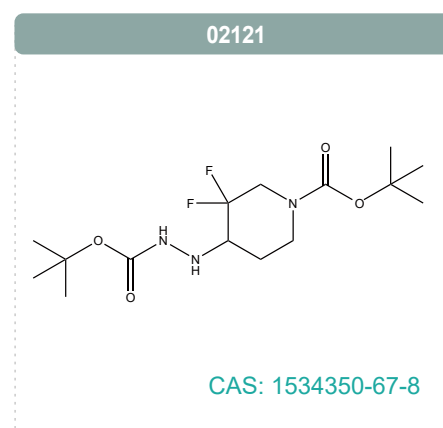
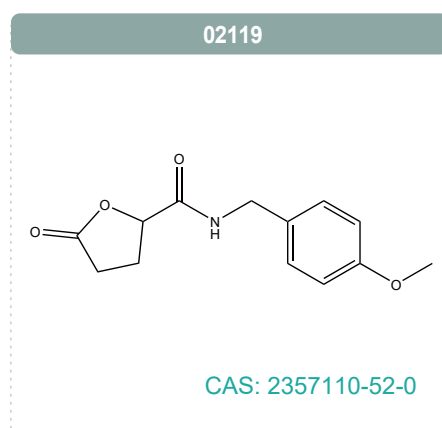
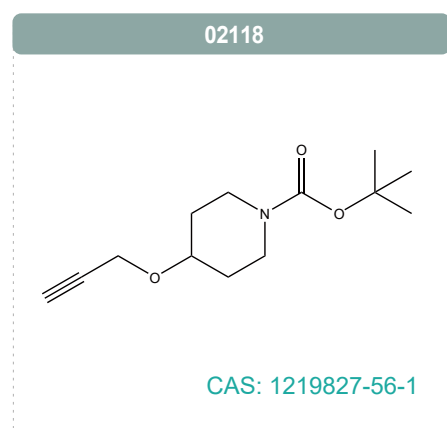
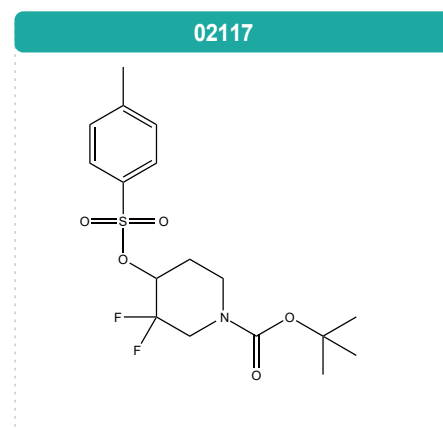
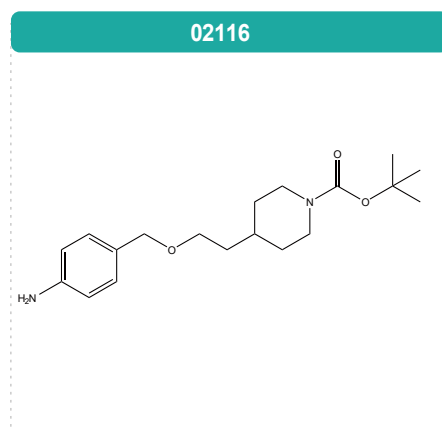
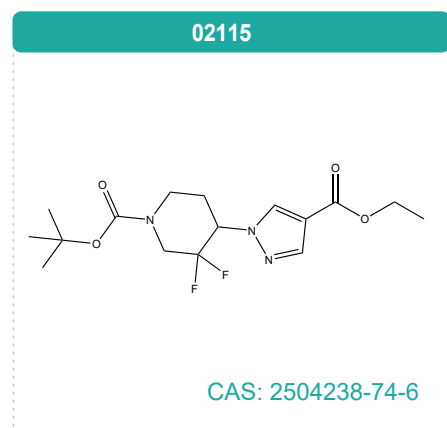
01932

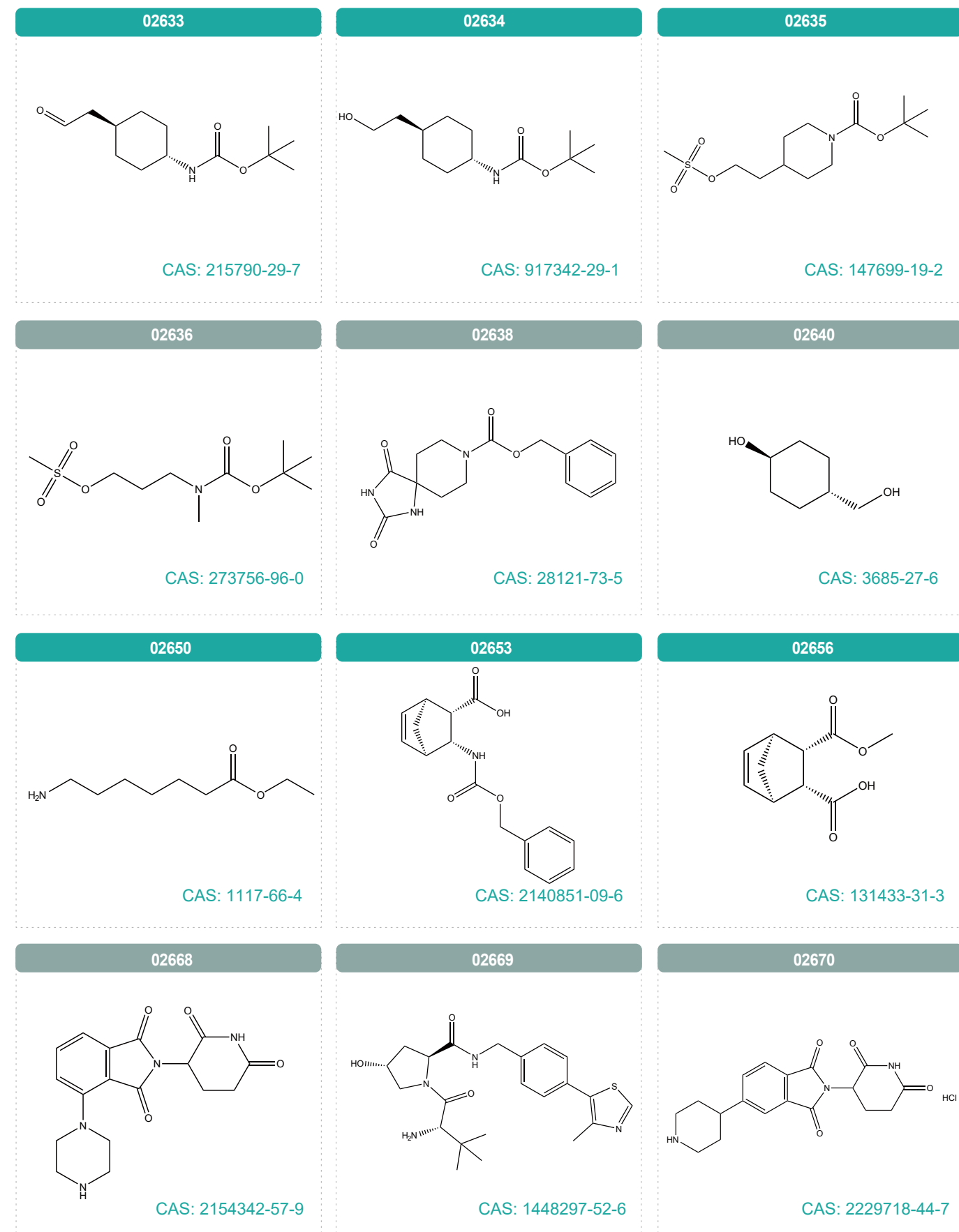
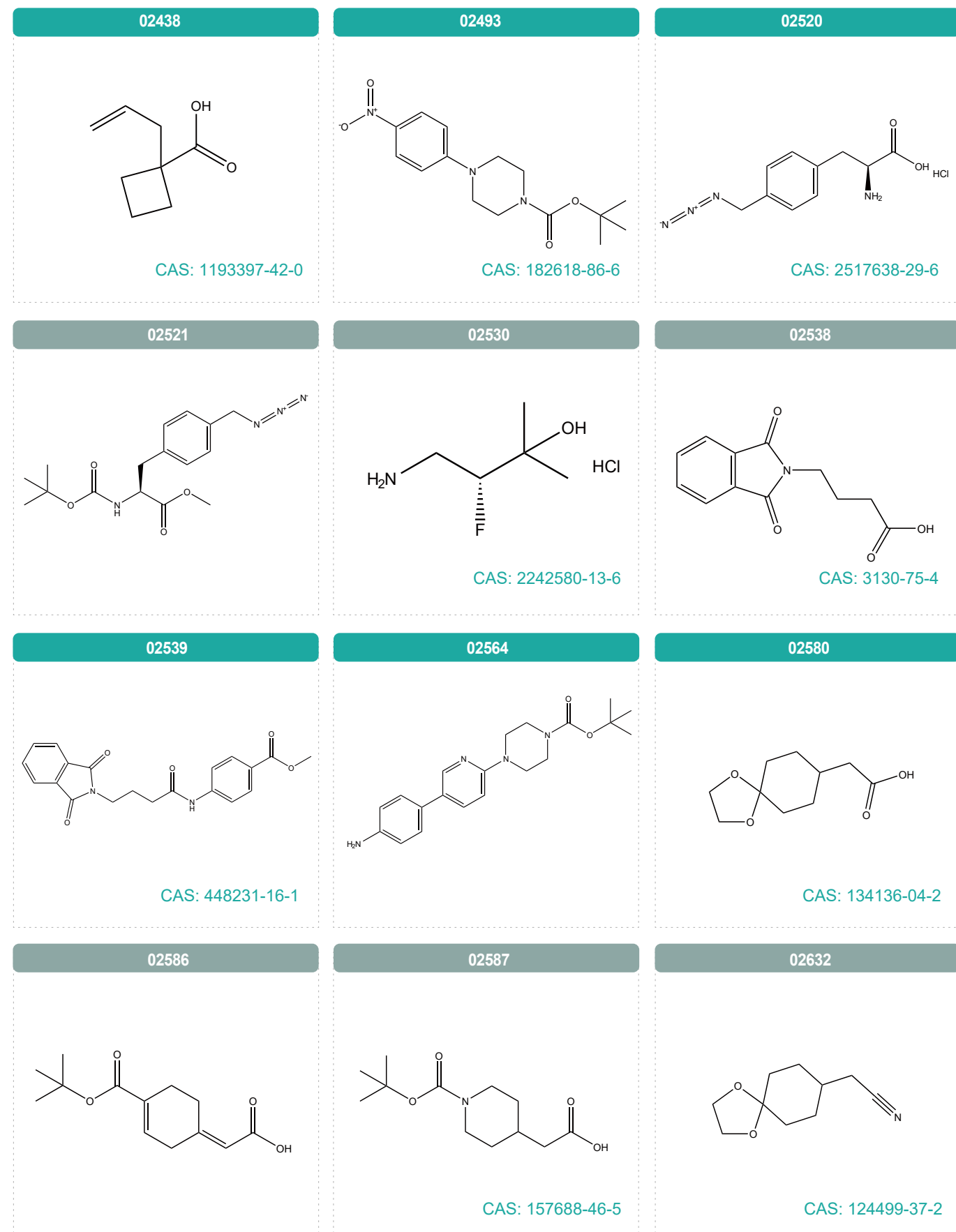












<p>02671</p> <p>CAS: 234081-98-2</p>	<p>02672</p> <p>CAS: 15026-17-2</p>	<p>02673</p> <p>CAS: 40052-13-9</p>
<p>02674</p> <p>CAS: 88987-42-2</p>	<p>02675</p> <p>CAS: 83948-53-2</p>	<p>02676</p> <p>CAS: 120289-22-7</p>
<p>02678</p> <p>CAS: 1228779-96-1</p>	<p>02681</p>	<p>02682</p>
<p>02683</p> <p>CAS: 2229718-43-6</p>	<p>02684</p> <p>CAS: 1010100-26-1</p>	<p>02685</p> <p>CAS: 518044-31-0</p>

<p>02686</p> <p>CAS: 883564-93-0</p>	<p>02687</p> <p>CAS: 149299-82-1</p>	<p>02688</p> <p>CAS: 2456391-60-7</p>
<p>02689</p> <p>CAS: 2468780-76-7</p>	<p>02701</p> <p>CAS: 113486-06-9</p>	<p>02709</p> <p>CAS: 1823250-58-3</p>
<p>02710</p>	<p>02718</p> <p>CAS: 39168-28-0</p>	<p>02723</p> <p>CAS: 184357-44-6</p>
<p>02728</p>	<p>02729</p> <p>CAS: 6315-57-7</p>	<p>02731</p> <p>CAS: 1158452-11-9</p>

