

Oligonucleotides

About Us

Pharmalego —

Products



Advantages



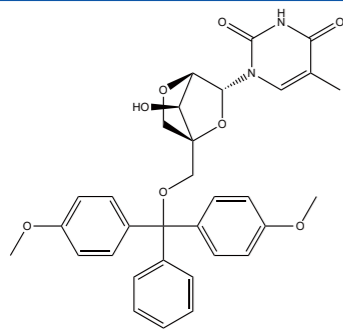
Oligonucleotides

Oligonucleotides are short nucleic acid polymers used in research, genetic testing and forensics.

Oligonucleotides are usually made up of 13 to 25 nucleotides and are designed to hybridize specifically to DNA or RNA sequences. Solid-phase clinical synthesis is used to manufacture these small bits of nucleic acid for use in polymerase chain reaction (PCR), DNA sequencing, library construction and artificial gene synthesis.

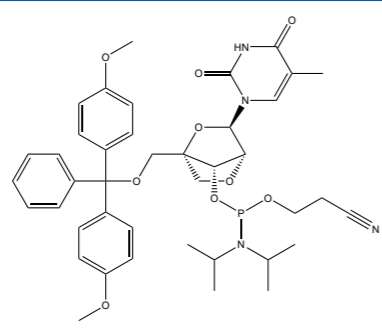
Oligonucleotides are used as probes for detecting specific sequences that are complementary to the oligonucleotides. When a certain sequence needs to be detected, a complementary oligonucleotide is synthesized in the laboratory. It is then bound to a fluorescent marker and allowed to bind to the specific segment of RNA or DNA it was designed to detect. Using the molecules as probes for detection is one of the most important functions of oligonucleotides.

03201



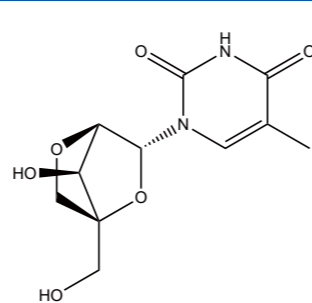
CAS: 206055-71-2

03202



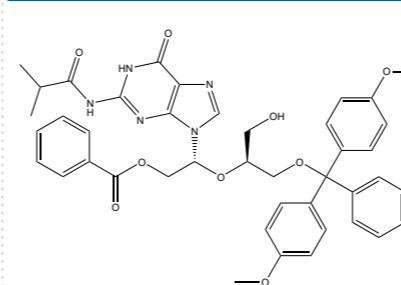
CAS: 206055-75-6

03203



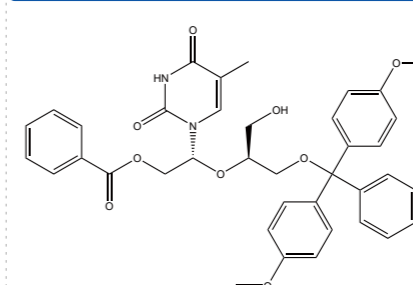
CAS: 206055-67-6

03249

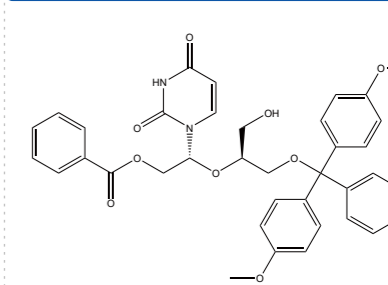


CAS: 1120329-60-3

03251

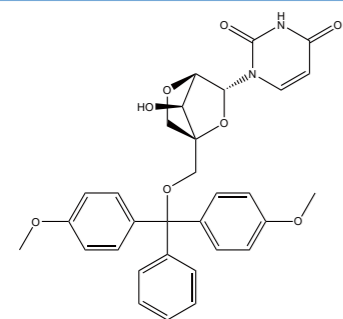


03253



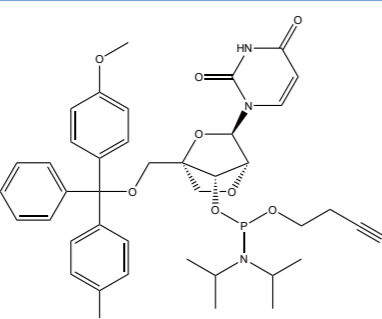
CAS: 251943-34-7

03204



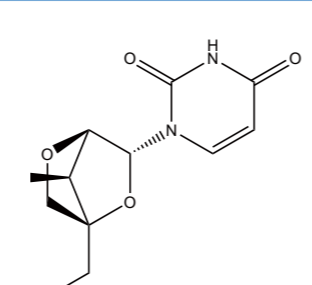
CAS: 195705-32-9

03206



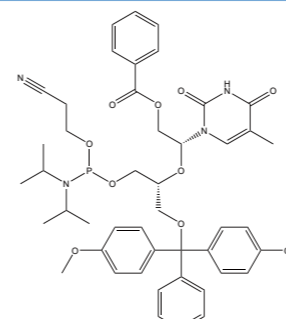
CAS: 206055-76-7

03207

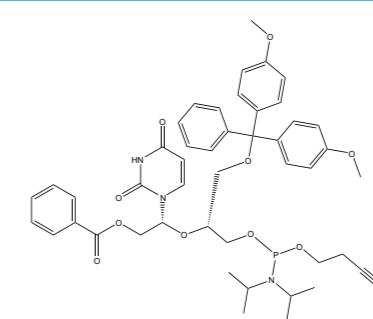


CAS: 200435-92-3

03260

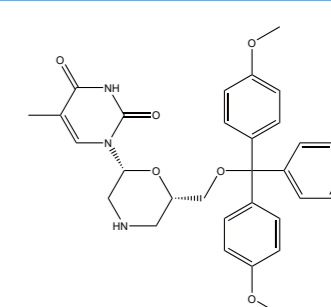


03263



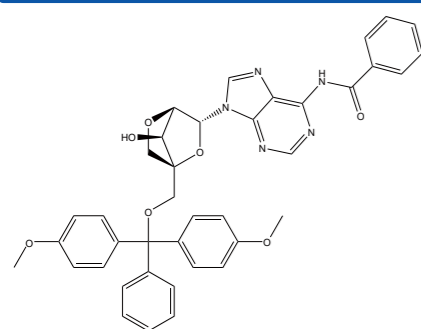
CAS: 1120329-48-7

03264



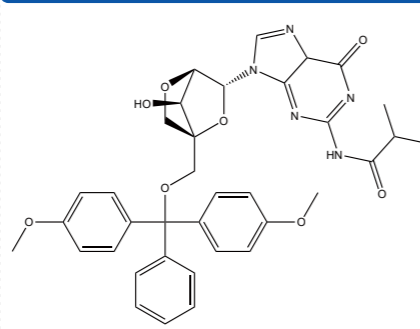
CAS: 143485-05-6

03208



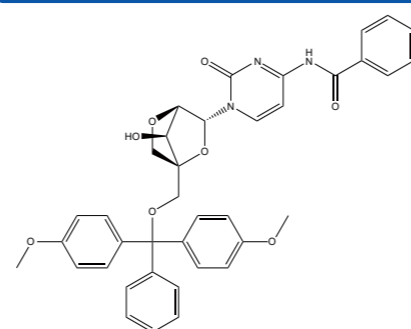
CAS: 206055-74-5

03209



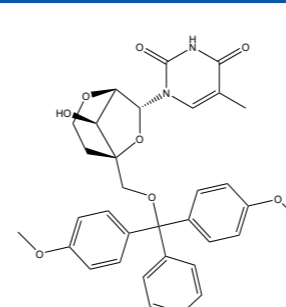
CAS: 206055-72-3

03221



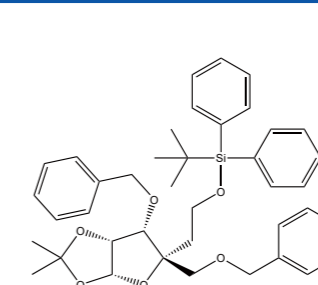
CAS: 206055-73-4

03266



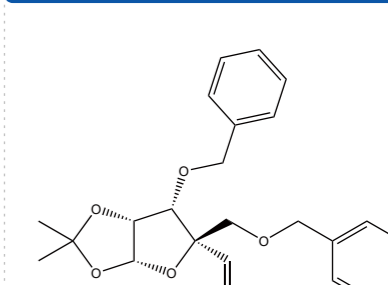
CAS: 287737-39-7

03270



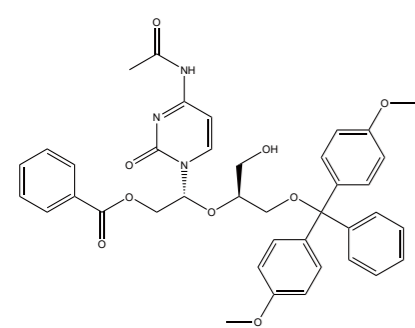
CAS: 1300590-29-7

03272



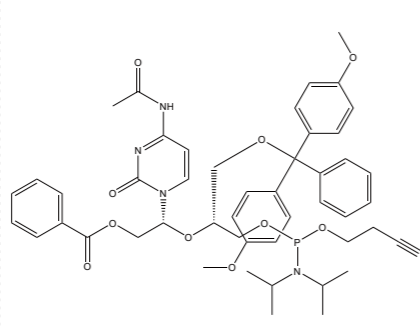
CAS: 287737-63-7

03222



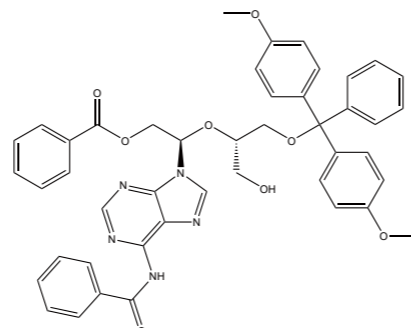
CAS: 1120329-55-6

03223



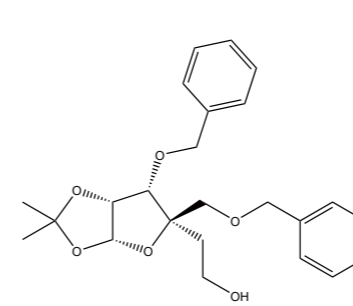
CAS: 1120329-56-7

03224



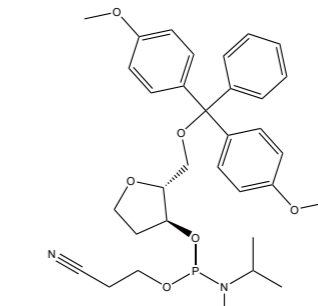
CAS: 1120329-51-2

03273



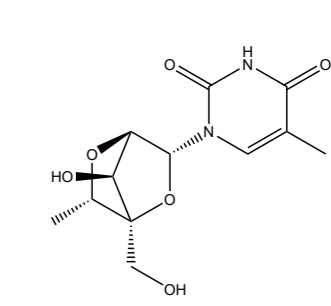
CAS: 287737-62-6

03309



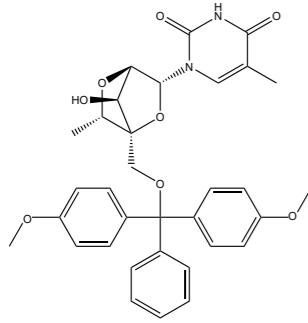
CAS: 129821-76-7

03276



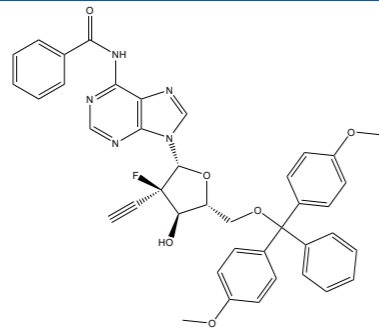
CAS: 1197032-96-4

03278

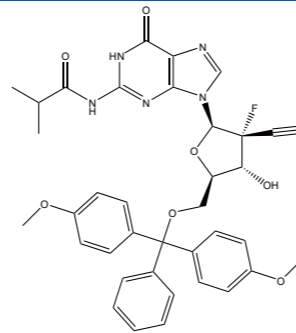


CAS: 1197033-21-8

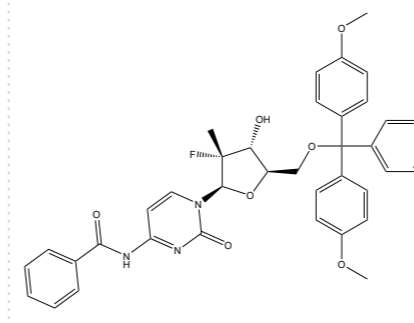
03281



03284

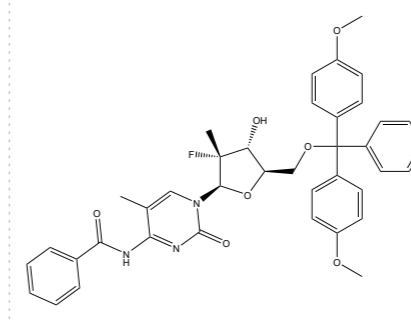


03304

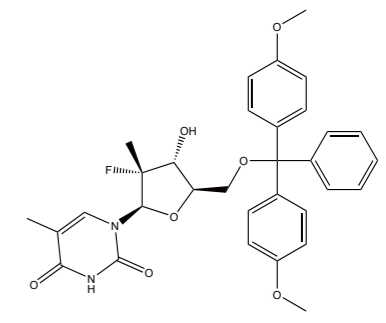


CAS: 1260508-97-1

03305

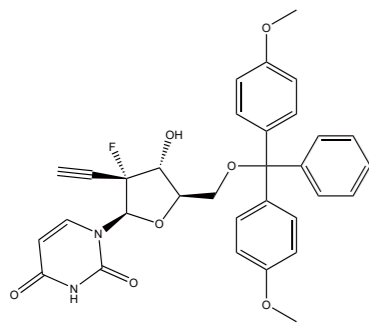


03306

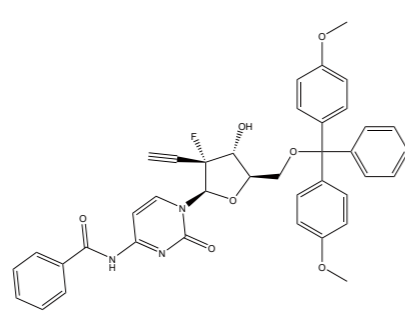


CAS: 1244762-79-5

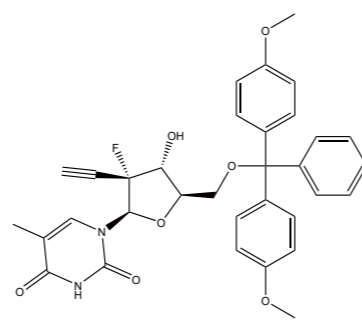
03288



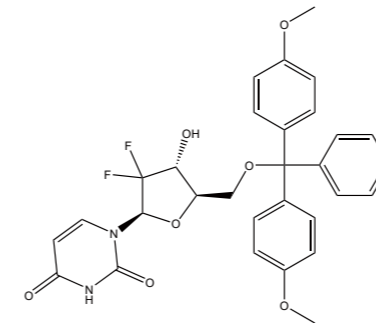
03290



03292

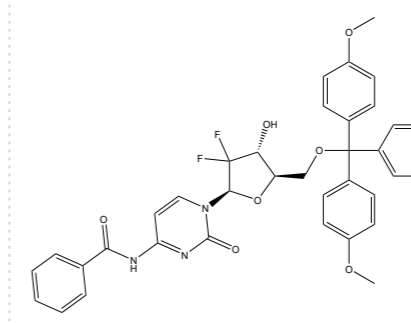


03307

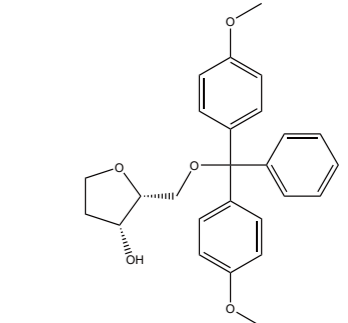


CAS: 1701426-99-4

03308

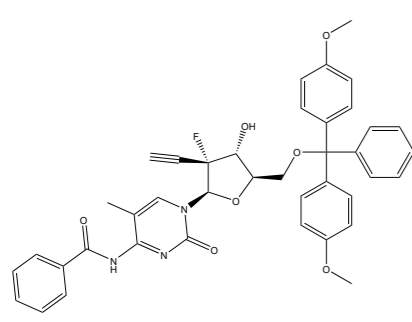


03310

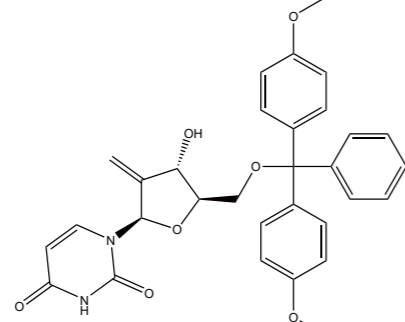


CAS: 552859-22-0

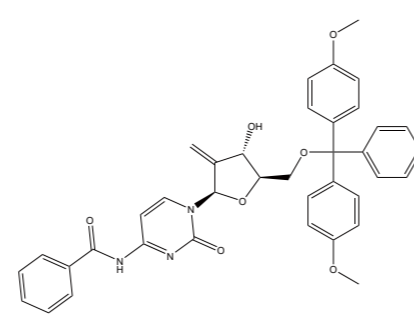
03293



03295

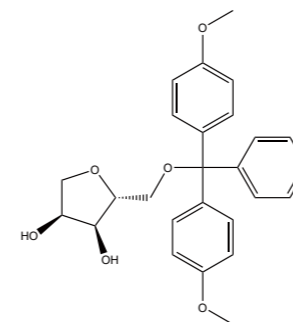


03298



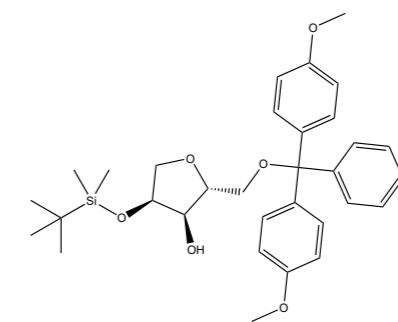
CAS: 142618-50-6

03311



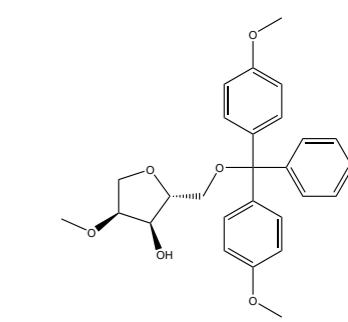
CAS: 159299-28-2

03312



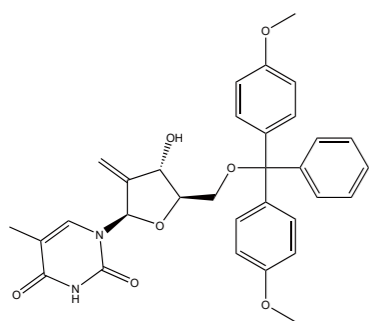
CAS: 159299-30-6

03313

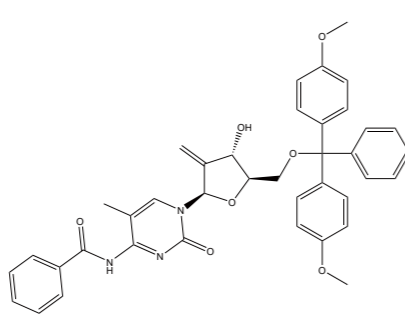


CAS: 1470023-71-2

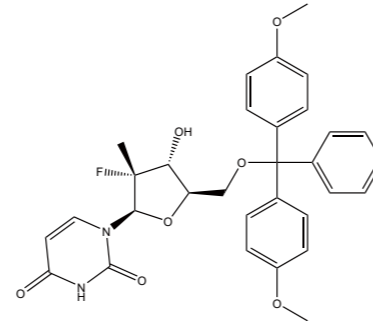
03301



03302

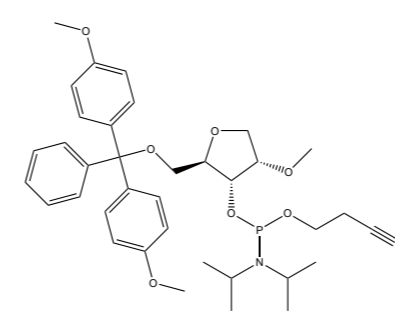


03303



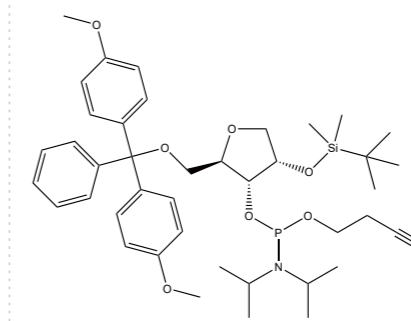
CAS: 1244762-79-5

03314



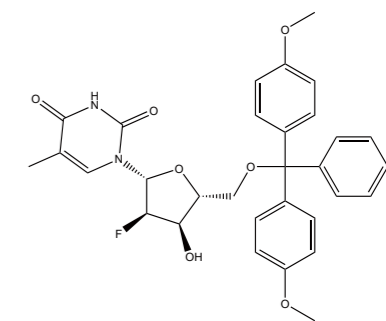
CAS: 1470023-72-3

03315



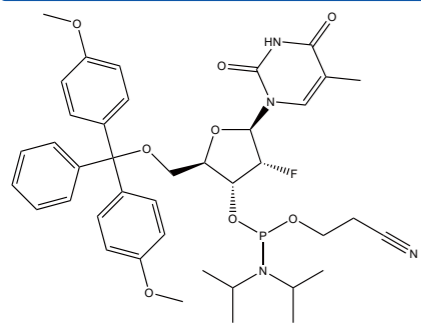
CAS: 159299-31-7

03316



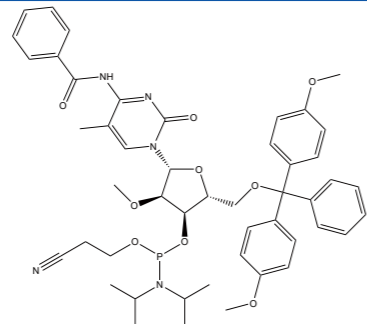
CAS: 133324-02-4

03317



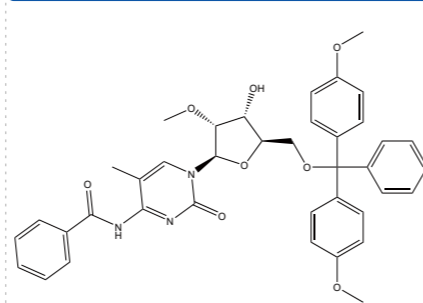
CAS: 182700-06-7

03318



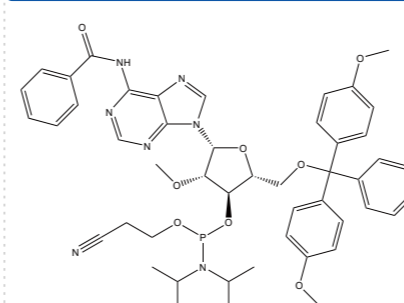
CAS: 166593-57-3

03319



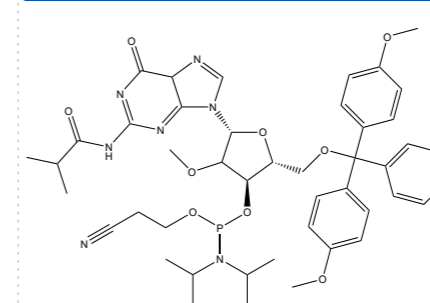
CAS: 741725-57-5

03329



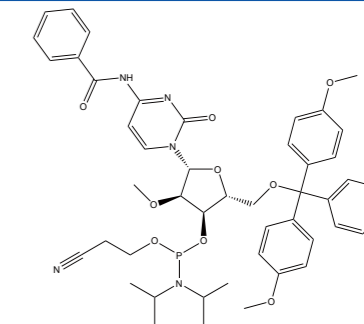
CAS: 1239669-70-5

03330



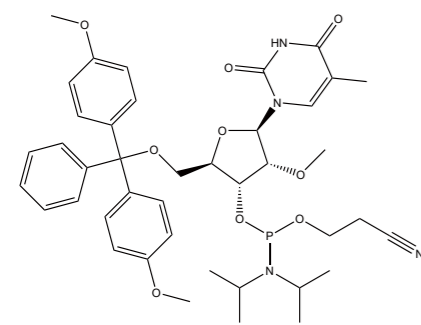
CAS: 150780-67-9

03331



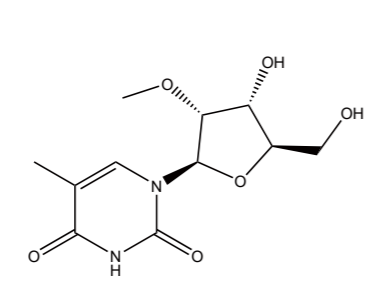
CAS: 145488-31-9

03320



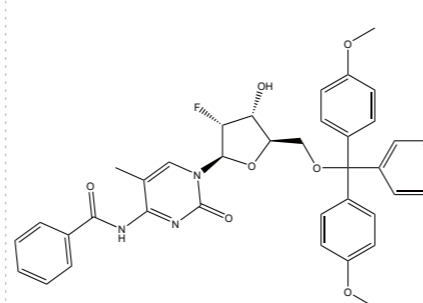
CAS: 168611-18-5

03321



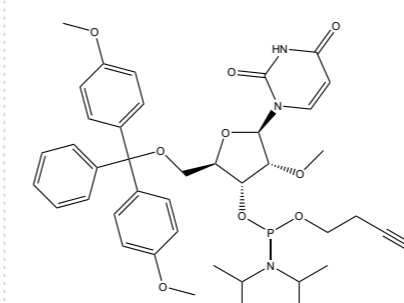
CAS: 55486-09-4

03322



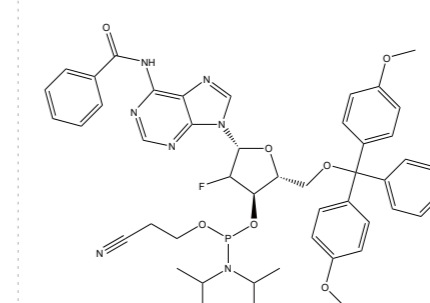
CAS: 182495-82-5

03332



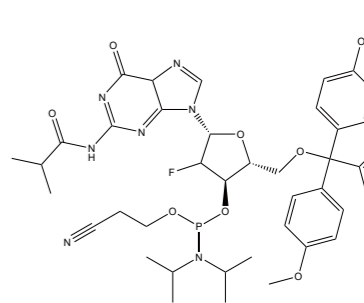
CAS: 110764-79-9

03333



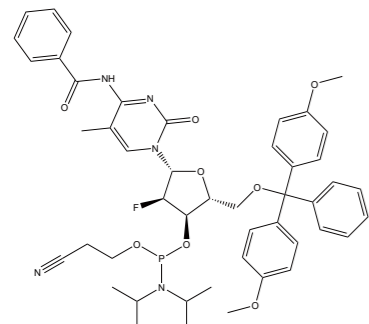
CAS: 136834-22-5

03334



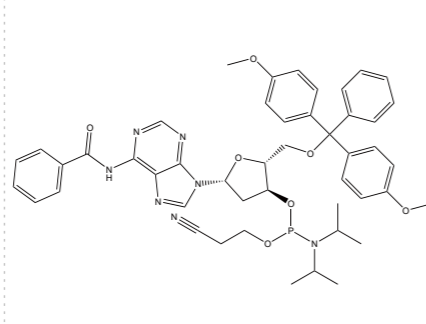
CAS: 144089-97-4

03323



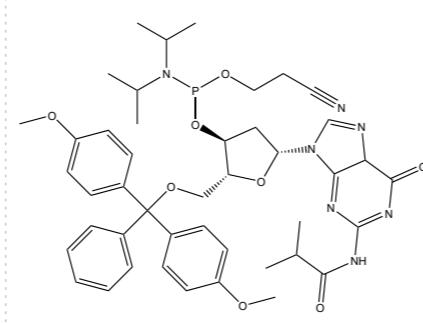
CAS: 182495-83-6

03324



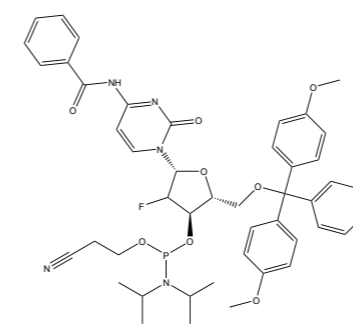
CAS: 98796-53-3

03325



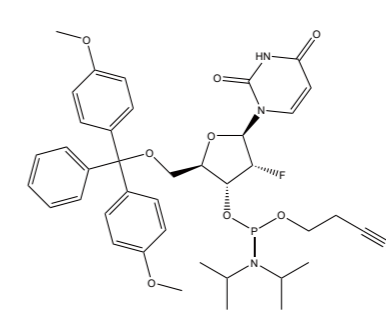
CAS: 93183-15-4

03335



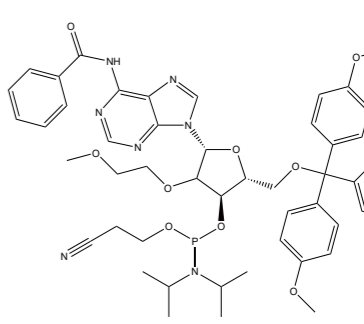
CAS: 161442-19-9

03336



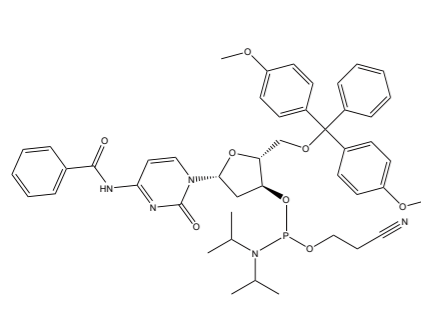
CAS: 177314-24-8

03337

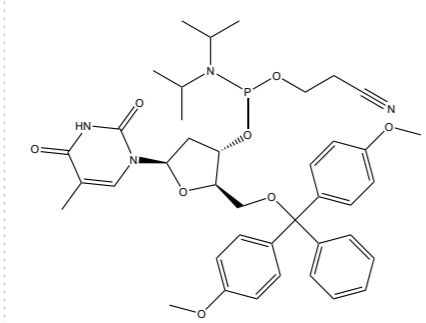


CAS: 251647-53-7

03326

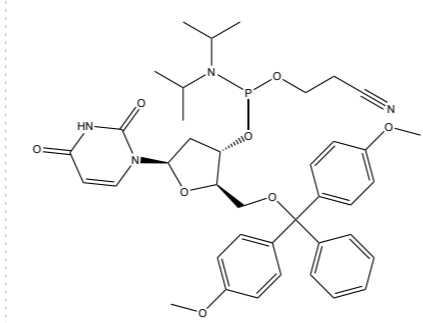


03327



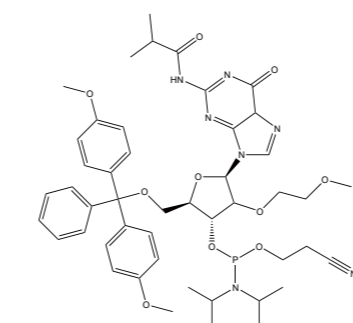
CAS: 98796-51-1

03328



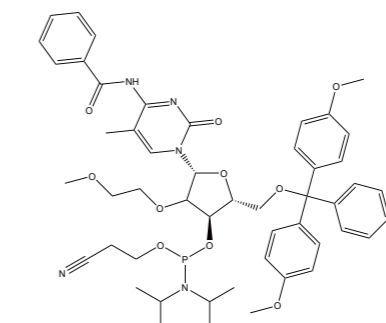
CAS: 109389-30-2

03205



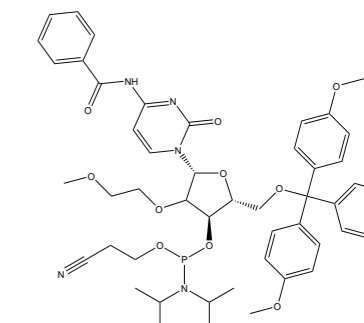
CAS: 251647-55-9

03210



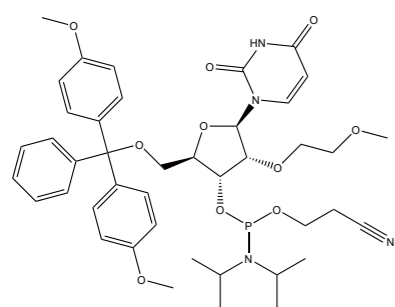
CAS: 163759-94-2

03211



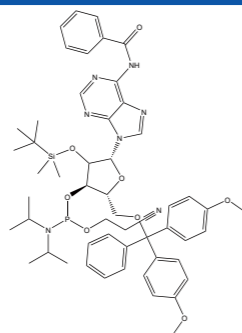
CAS: 251647-54-8

03212



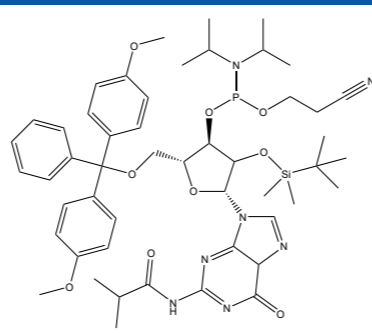
CAS: 163759-97-5

03213



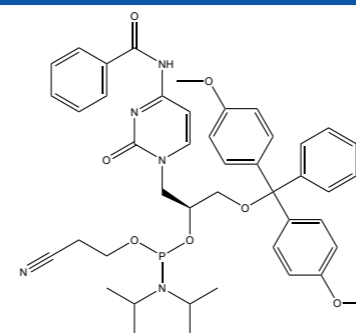
CAS: 238096-70-3

03214

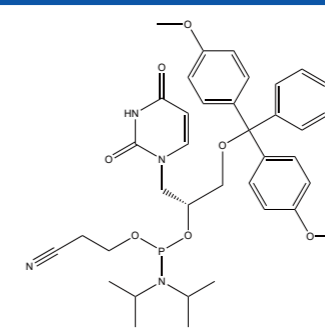


CAS: 131316-87-5

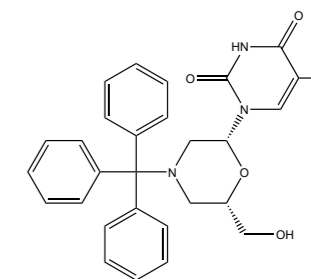
03228



03229

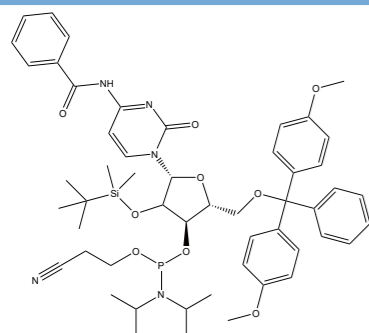


03230



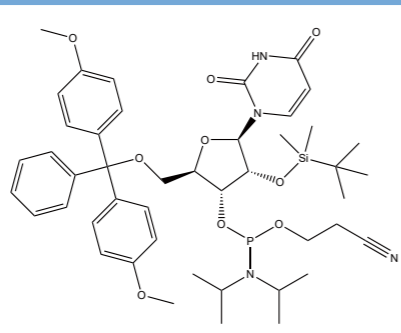
CAS: 914361-76-5

03215



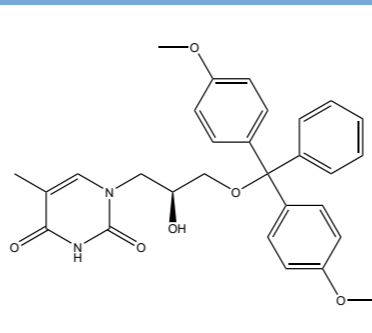
CAS: 1542260-53-6

03216



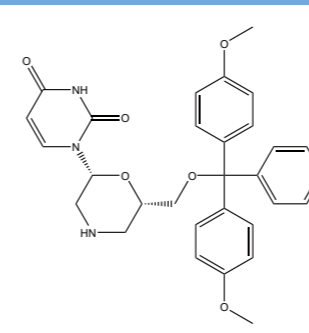
CAS: 1193204-41-9

03217



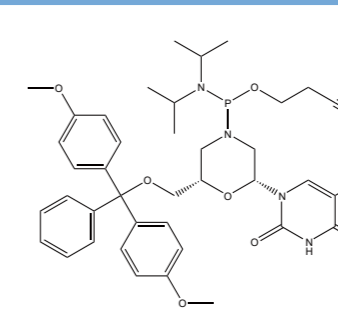
CAS: 168332-12-5

03231



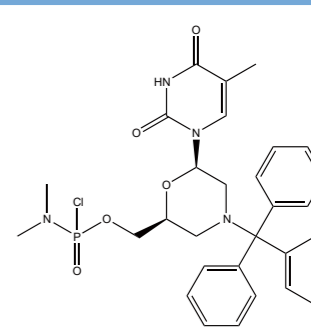
CAS: 1127343-02-5

03232



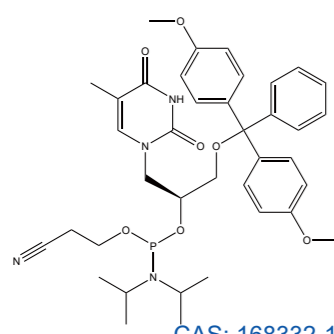
CAS: 1037305-43-3

03233



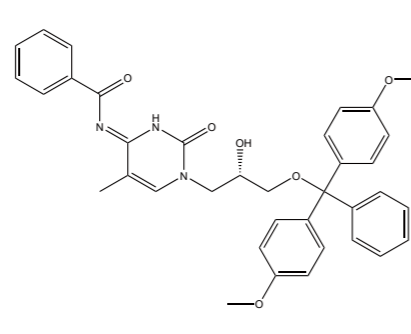
CAS: 956139-30-3

03218

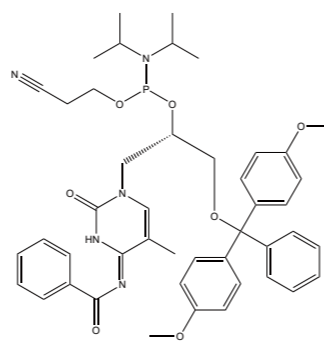


CAS: 168332-13-6

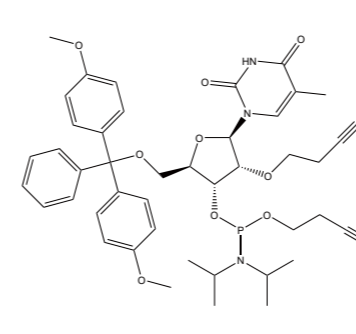
03219



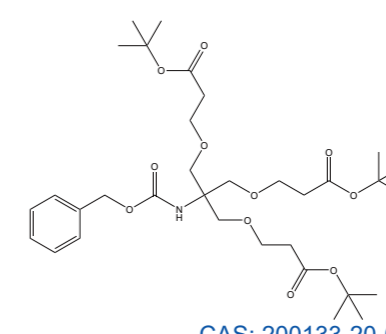
03220



03234

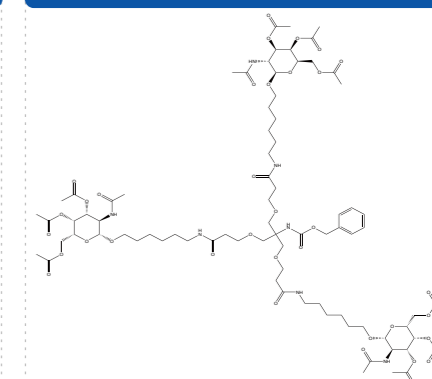


03235

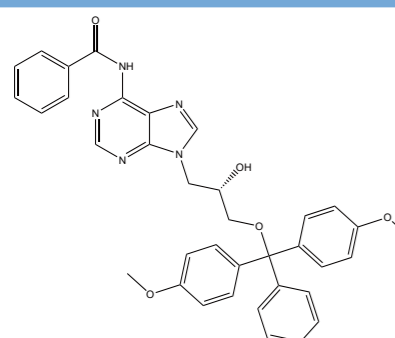


CAS: 200133-20-6

03236

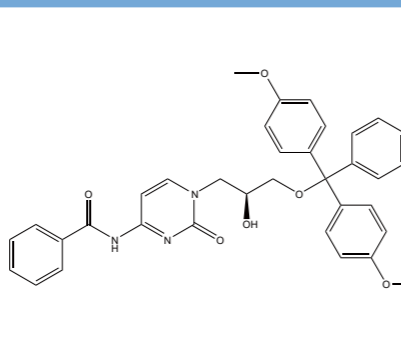


03225



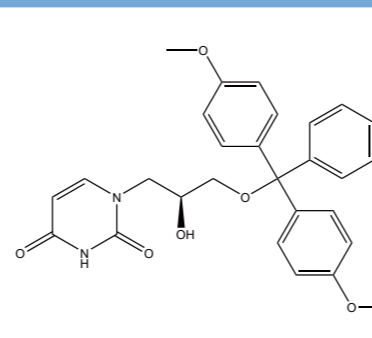
CAS: 115196-70-8

03226



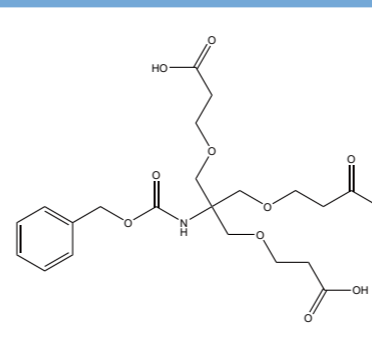
CAS: 127757-40-8

03227



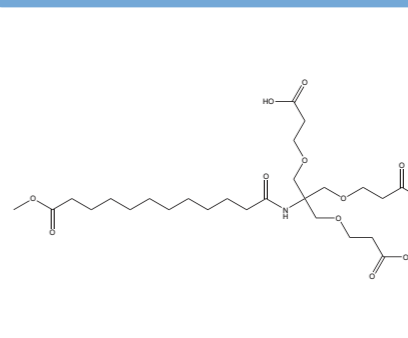
CAS: 494784-12-2

03237



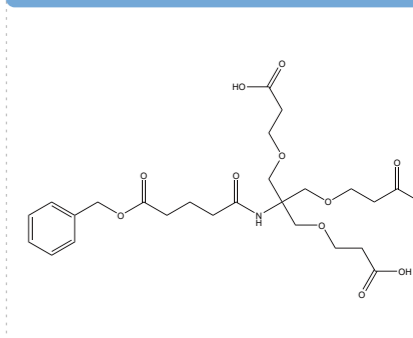
CAS: 200133-16-0

03238



CAS: 1551527-36-6

03239



CAS: 1820890-96-7

